

## Product datasheet for **TA378794S**

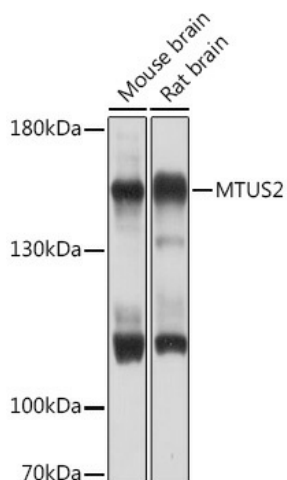
### MTUS2 Rabbit Polyclonal Antibody

#### Product data:

Product Type:	Primary Antibodies
Applications:	ELISA, WB
Recommended Dilution:	WB, 1:500 - 1:2000 ELISA, Recommended starting concentration is 1 µg/mL. Please optimize the concentration based on your specific assay requirements.
Reactivity:	Mouse, Rat
Host:	Rabbit
Isotype:	IgG
Clonality:	Polyclonal
Formulation:	Buffer: PBS with 0.02% sodium azide, 50% glycerol, pH 7.3.
Concentration:	lot specific
Purification:	Affinity purification
Conjugation:	Unconjugated
Storage:	Store at -20°C. Avoid freeze / thaw cycles.
Stability:	Shelf life: one year from despatch.
Predicted Protein Size:	150kDa
Gene Name:	microtubule associated tumor suppressor candidate 2
Database Link:	<a href="#">Q5JR59</a>
Background:	Enables microtubule binding activity and protein homodimerization activity. Part of nucleus. Colocalizes with centrosome and cytoplasmic microtubule.
Synonyms:	5730592G18Rik; A730013O20Rik; AU067634; C130038G02Rik; Cazip; Gm763; mKIAA0774



[View online »](#)

**Product images:**


Western blot analysis of various lysates using MTUS2 Rabbit pAb ([TA378794]) at 1:1000 dilution.

Secondary antibody: HRP-conjugated Goat anti-Rabbit IgG (H+L) (AS014) at 1:10000 dilution.

Lysates/proteins: 25µg per lane.

Blocking buffer: 3% nonfat dry milk in TBST.

Detection: ECL Basic Kit (RM00020).

Exposure time: 10s.