

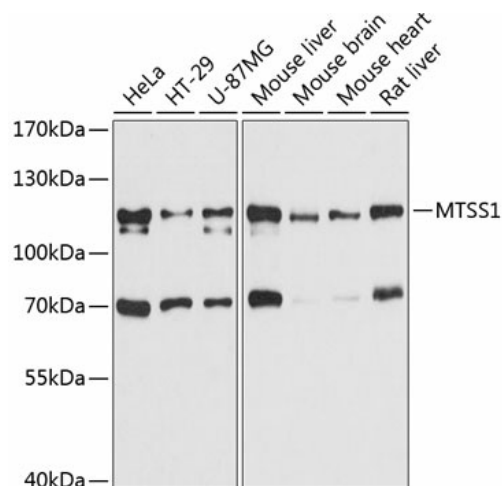
Product datasheet for **TA378789S**

MTSS1 Rabbit Polyclonal Antibody

Product data:

Product Type:	Primary Antibodies
Applications:	ELISA, WB
Recommended Dilution:	WB, 1:500 - 1:2000 ELISA, Recommended starting concentration is 1 µg/mL. Please optimize the concentration based on your specific assay requirements.
Reactivity:	Human, Mouse, Rat
Modifications:	Unmodified
Host:	Rabbit
Isotype:	IgG
Clonality:	Polyclonal
Formulation:	Buffer: PBS with 0.02% sodium azide, 50% glycerol, pH 7.3.
Concentration:	lot specific
Purification:	Affinity purification
Conjugation:	Unconjugated
Storage:	Store at -20°C. Avoid freeze / thaw cycles.
Stability:	Shelf life: one year from despatch.
Predicted Protein Size:	82kDa
Gene Name:	metastasis suppressor 1
Database Link:	Entrez Gene 9788 Human O43312
Background:	Enables actin monomer binding activity; identical protein binding activity; and signaling receptor binding activity. Predicted to be involved in cellular response to fluid shear stress; negative regulation of epithelial cell proliferation; and urogenital system development. Predicted to act upstream of or within several processes, including actin filament polymerization; adherens junction maintenance; and magnesium ion homeostasis. Located in actin cytoskeleton.
Synonyms:	DKFZp781P2223; FLJ44694; KIAA0429; MIM; MIMA; MIMB


[View online »](#)

Product images:


Western blot analysis of various lysates using MTSS1 Rabbit pAb (TA378789S) at 1:3000 dilution.

Secondary antibody: HRP-conjugated Goat anti-Rabbit IgG (H+L) (AS014) at 1:10000 dilution.

Lysates/proteins: 25µg per lane.

Blocking buffer: 3% nonfat dry milk in TBST.

Detection: ECL Basic Kit (RM00020).

Exposure time: 10s.