

Product datasheet for **TA378777S**

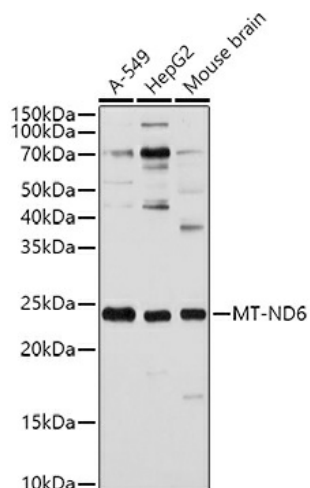
NADH Dehydrogenase subunit 6 (ND6) Rabbit Polyclonal Antibody

Product data:

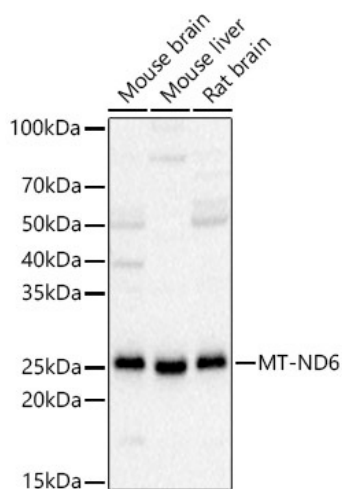
Product Type:	Primary Antibodies
Applications:	ELISA, IHC, WB
Recommended Dilution:	WB, 1:1000 - 1:5000 IHC-P, 1:50 - 1:200 ELISA, Recommended starting concentration is 1 µg/mL. Please optimize the concentration based on your specific assay requirements.
Reactivity:	Human, Mouse, Rat
Host:	Rabbit
Isotype:	IgG
Clonality:	Polyclonal
Formulation:	Buffer: PBS with 0.02% sodium azide, 50% glycerol, pH 7.3.
Concentration:	lot specific
Purification:	Affinity purification
Conjugation:	Unconjugated
Storage:	Store at -20°C. Avoid freeze / thaw cycles.
Stability:	Shelf life: one year from despatch.
Predicted Protein Size:	19kDa
Gene Name:	mitochondrially encoded NADH dehydrogenase 6
Database Link:	Entrez Gene 4541 Human P03923
Background:	Enables NADH dehydrogenase (ubiquinone) activity. Involved in mitochondrial electron transport, NADH to ubiquinone and mitochondrial respiratory chain complex I assembly. Predicted to be located in mitochondrial inner membrane. Implicated in Leber hereditary optic neuropathy; Leigh disease; and spinal muscular atrophy with lower extremity predominant 2B.

[View online »](#)

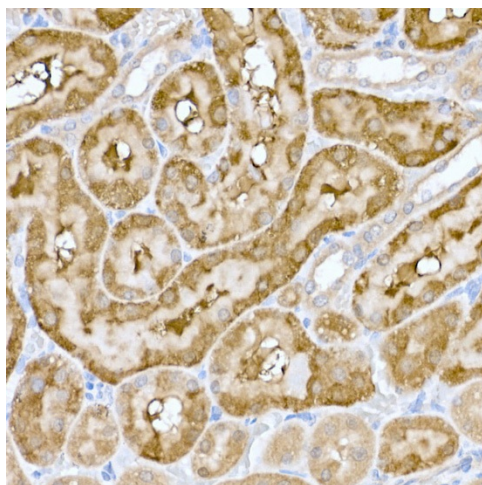
Product images:



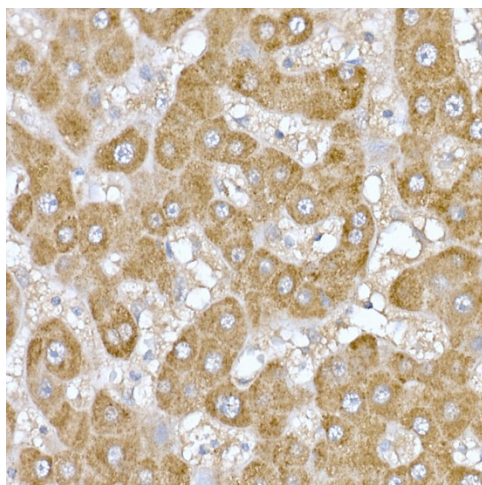
Western blot analysis of lysates from HepG2 cells



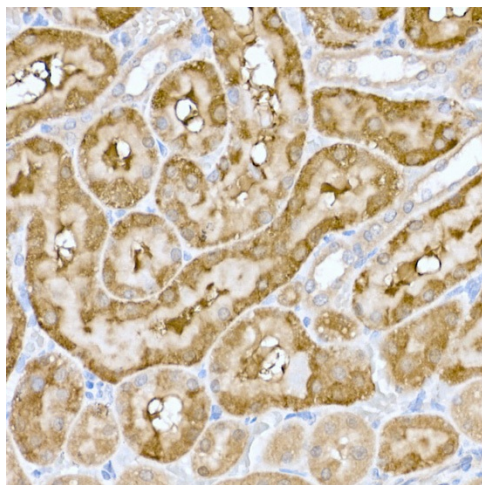
Western blot analysis of various lysates



Immunohistochemistry analysis of paraffin-embedded Human breast cancer using MT-ND6 Rabbit pAb ([TA378777]) at dilution of 1:100 (40x lens). High pressure antigen retrieval performed with 0.01M Citrate Bufferr (pH 6.0) prior to IHC staining.



Immunohistochemistry analysis of paraffin-embedded Human liver using MT-ND6 Rabbit pAb ([TA378777]) at dilution of 1:100 (40x lens). High pressure antigen retrieval performed with 0.01M Citrate Bufferr (pH 6.0) prior to IHC staining.



Immunohistochemistry analysis of paraffin-embedded Rat kidney using MT-ND6 Rabbit pAb ([TA378777]) at dilution of 1:100 (40x lens). High pressure antigen retrieval performed with 0.01M Citrate Bufferr (pH 6.0) prior to IHC staining.