

## Product datasheet for **TA378774S**

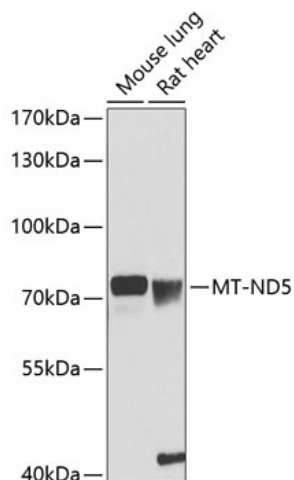
### ND5 Rabbit Polyclonal Antibody

#### Product data:

Product Type:	Primary Antibodies
Applications:	ELISA, WB
Recommended Dilution:	WB, 1:500 - 1:2000 ELISA, Recommended starting concentration is 1 µg/mL. Please optimize the concentration based on your specific assay requirements.
Reactivity:	Human, Mouse, Rat
Modifications:	Unmodified
Host:	Rabbit
Isotype:	IgG
Clonality:	Polyclonal
Formulation:	Buffer: PBS with 0.02% sodium azide, 50% glycerol, pH 7.3.
Concentration:	lot specific
Purification:	Affinity purification
Conjugation:	Unconjugated
Storage:	Store at -20°C. Avoid freeze / thaw cycles.
Stability:	Shelf life: one year from despatch.
Predicted Protein Size:	67kDa
Gene Name:	NADH dehydrogenase 5, mitochondrial
Database Link:	<a href="#">Entrez Gene 17721 Mouse P03915</a>
Background:	Contributes to NADH dehydrogenase (ubiquinone) activity. Predicted to be involved in electron transport coupled proton transport; mitochondrial electron transport, NADH to ubiquinone; and mitochondrial respiratory chain complex I assembly. Located in mitochondrion. Is expressed in central nervous system; heart; liver; metanephros; and retina. Human ortholog(s) of this gene implicated in Leber hereditary optic neuropathy; Leigh disease; and MELAS syndrome. Orthologous to human MT-ND5 (mitochondrially encoded NADH:ubiquinone oxidoreductase core subunit 5).



[View online »](#)

**Product images:**


Western blot analysis of various lysates using MT-ND5 Rabbit pAb ([TA378774]) at 1:1000 dilution. Secondary antibody: HRP-conjugated Goat anti-Rabbit IgG (H+L) (AS014) at 1:10000 dilution. Lysates/proteins: 25µg per lane. Blocking buffer: 3% nonfat dry milk in TBST. Detection: ECL Basic Kit (RM00020). Exposure time: 90s.