

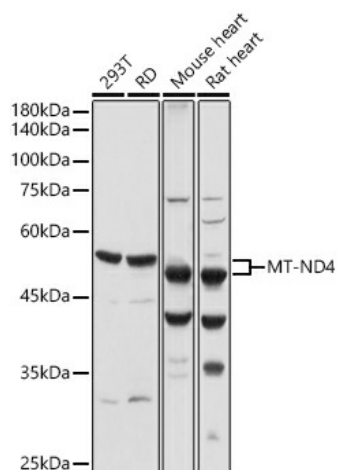
Product datasheet for **TA378773S**

ND4 Rabbit Polyclonal Antibody

Product data:

Product Type:	Primary Antibodies
Applications:	ELISA, WB
Recommended Dilution:	WB, 1:500 - 1:1000 ELISA, Recommended starting concentration is 1 µg/mL. Please optimize the concentration based on your specific assay requirements.
Reactivity:	Human, Mouse, Rat
Modifications:	Unmodified
Host:	Rabbit
Isotype:	IgG
Clonality:	Polyclonal
Formulation:	Buffer: PBS with 0.02% sodium azide, 50% glycerol, pH 7.3.
Concentration:	lot specific
Purification:	Affinity purification
Conjugation:	Unconjugated
Storage:	Store at -20°C. Avoid freeze / thaw cycles.
Stability:	Shelf life: one year from despatch.
Predicted Protein Size:	51kDa
Gene Name:	NADH dehydrogenase 4, mitochondrial
Database Link:	P03911
Background:	Predicted to enable NADH dehydrogenase (ubiquinone) activity and ubiquinone binding activity. Predicted to contribute to NADH dehydrogenase activity. Predicted to be involved in several processes, including electron transport coupled proton transport; mitochondrial electron transport, NADH to ubiquinone; and mitochondrial respiratory chain complex I assembly. Located in mitochondrion. Human ortholog(s) of this gene implicated in Leber hereditary optic neuropathy; Parkinson's disease; macular degeneration; and schizophrenia. Orthologous to human MT-ND4 (mitochondrially encoded NADH:ubiquinone oxidoreductase core subunit 4).

[View online »](#)

Product images:


Western blot analysis of various lysates using MT-ND4 Rabbit pAb (TA378773) at 1:1000 dilution. Secondary antibody: HRP-conjugated Goat anti-Rabbit IgG (H+L) (AS014) at 1:10000 dilution. Lysates/proteins: 25µg per lane. Blocking buffer: 3% nonfat dry milk in TBST. Detection: ECL Basic Kit (RM00020). Exposure time: 1s.