

Product datasheet for **TA378770S**

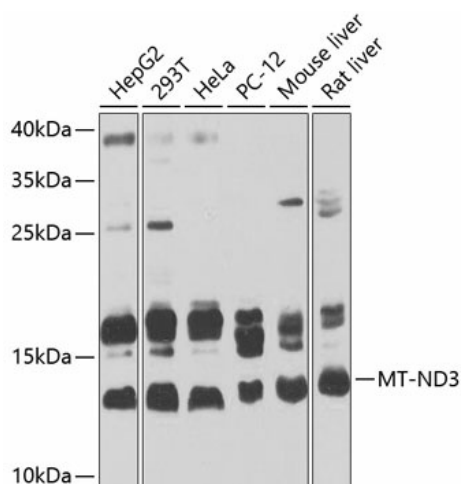
ND3 Rabbit Polyclonal Antibody

Product data:

Product Type:	Primary Antibodies
Applications:	ELISA, WB
Recommended Dilution:	WB, 1:500 - 1:2000 ELISA, Recommended starting concentration is 1 µg/mL. Please optimize the concentration based on your specific assay requirements.
Reactivity:	Human, Mouse, Rat
Modifications:	Unmodified
Host:	Rabbit
Isotype:	IgG
Clonality:	Polyclonal
Formulation:	Buffer: PBS with 0.02% sodium azide, 50% glycerol, pH 7.3.
Concentration:	lot specific
Purification:	Affinity purification
Conjugation:	Unconjugated
Storage:	Store at -20°C. Avoid freeze / thaw cycles.
Stability:	Shelf life: one year from despatch.
Predicted Protein Size:	13kDa
Gene Name:	NADH dehydrogenase 3, mitochondrial
Database Link:	Entrez Gene 17718 Mouse
Background:	Predicted to enable NADH dehydrogenase (ubiquinone) activity. Predicted to be involved in cellular response to glucocorticoid stimulus; mitochondrial electron transport, NADH to ubiquinone; and response to oxidative stress. Located in mitochondrion. Is expressed in several structures, including alimentary system; brain; genitourinary system; hemolymphoid system gland; and liver and biliary system. Human ortholog(s) of this gene implicated in Leber hereditary optic neuropathy; Leigh disease; and Parkinson's disease. Orthologous to human MT-ND3 (mitochondrially encoded NADH:ubiquinone oxidoreductase core subunit 3).



[View online »](#)

Product images:


Western blot analysis of various lysates using MT-ND3 Rabbit pAb (TA378770) at 1:1000 dilution. Secondary antibody: HRP-conjugated Goat anti-Rabbit IgG (H+L) (AS014) at 1:10000 dilution. Lysates/proteins: 25µg per lane. Blocking buffer: 3% nonfat dry milk in TBST. Detection: ECL Basic Kit (RM00020). Exposure time: 30s.