

Product datasheet for **TA378761**

MTMR6 Rabbit Polyclonal Antibody

Product data:

Product Type:	Primary Antibodies
Applications:	WB
Recommended Dilution:	WB,1:200 - 1:2000
Reactivity:	Human, Mouse, Rat
Modifications:	Unmodified
Host:	Rabbit
Isotype:	IgG
Clonality:	Polyclonal
Immunogen:	Recombinant fusion protein containing a sequence corresponding to amino acids 382-621 of human MTMR6 (NP_004676.3).
Formulation:	Buffer: PBS with 0.02% sodium azide,50% glycerol,pH7.3.
Concentration:	lot specific
Purification:	Affinity purification
Conjugation:	Unconjugated
Storage:	Store at -20°C. Avoid freeze / thaw cycles.
Stability:	Shelf life: one year from despatch.
Predicted Protein Size:	63kDa/71kDa
Gene Name:	myotubularin related protein 6
Database Link:	Entrez Gene 9107 Human Q9Y217



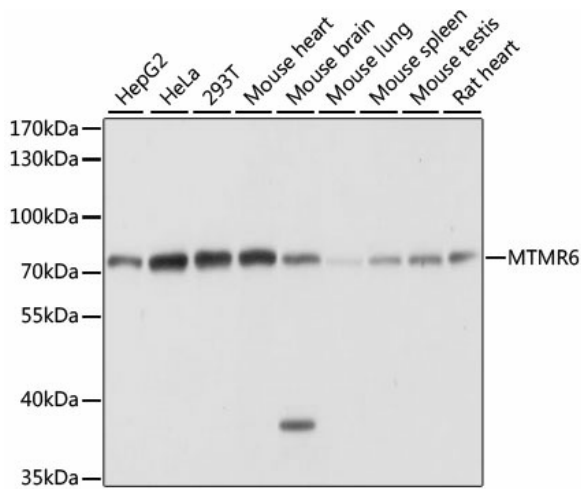
[View online »](#)

Background:

Phosphatase that acts on lipids with a phosphoinositol headgroup. Dephosphorylates phosphatidylinositol 3-phosphate (PtdIns(3P and phosphatidylinositol 3,5-bisphosphate (Probable. Binds with high affinity to phosphatidylinositol 3,5-bisphosphate (PtdIns(3,5P2 but also to phosphatidylinositol 3-phosphate (PtdIns(3P, phosphatidylinositol 4-phosphate (PtdIns(4P, and phosphatidylinositol 5-phosphate (PtdIns(5P, phosphatidic acid and phosphatidylserine. Negatively regulates ER-Golgi protein transport (By similarity. Probably in association with MTMR9, plays a role in the late stages of macropinocytosis by dephosphorylating phosphatidylinositol 3-phosphate in membrane ruffles. Acts as a negative regulator of KCNN4/KCa3.1 channel activity in CD4(+) T-cells possibly by decreasing intracellular levels of phosphatidylinositol 3-phosphate. Negatively regulates proliferation of reactivated CD4(+) T-cells. In complex with MTMR9, negatively regulates DNA damage-induced apoptosis. The formation of the MTMR6-MTMR9 complex stabilizes both MTMR6 and MTMR9 protein levels.

Synonyms:

MTMR6

Product images:


Western blot analysis of extracts of various cell lines, using MTMR6 antibody (TA378761) at 1:1000 dilution. | Secondary antibody: HRP Goat Anti-Rabbit IgG (H+L) at 1:10000 dilution. | Lysates/proteins: 25ug per lane. | Blocking buffer: 3% nonfat dry milk in TBST. | Detection: ECL Basic Kit . | Exposure time: 1s.