

## Product datasheet for **TA378745**

### **MTP18 (MTFP1) Rabbit Polyclonal Antibody**

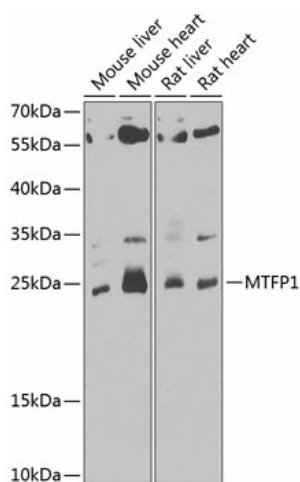
#### **Product data:**

<b>Product Type:</b>	Primary Antibodies
<b>Applications:</b>	WB
<b>Recommended Dilution:</b>	WB,1:500 - 1:2000
<b>Reactivity:</b>	Human, Mouse, Rat
<b>Modifications:</b>	Unmodified
<b>Host:</b>	Rabbit
<b>Isotype:</b>	IgG
<b>Clonality:</b>	Polyclonal
<b>Immunogen:</b>	Recombinant fusion protein containing a sequence corresponding to amino acids 1-166 of human MTFP1 (NP_057582.2).
<b>Formulation:</b>	Buffer: PBS with 0.02% sodium azide,50% glycerol,pH7.3.
<b>Concentration:</b>	lot specific
<b>Purification:</b>	Affinity purification
<b>Conjugation:</b>	Unconjugated
<b>Storage:</b>	Store at -20°C. Avoid freeze / thaw cycles.
<b>Stability:</b>	Shelf life: one year from despatch.
<b>Predicted Protein Size:</b>	14kDa/18kDa
<b>Gene Name:</b>	mitochondrial fission process 1
<b>Database Link:</b>	<a href="#">Entrez Gene 51537 Human Q9UDX5</a>
<b>Background:</b>	MTP18 is a mitochondrial protein and downstream target of the phosphatidylinositol 3-kinase (see PIK3CA, MIM 171834) signaling pathway that plays a role in cell viability and mitochondrial dynamics (Tondera et al., 2004 [PubMed 15155745]).
<b>Synonyms:</b>	1700020C11Rik; 2610507A21Rik; AV005788; Mtp18; RP23-81P12.9



[View online »](#)

## Product images:



Western blot analysis of extracts of various cell lines, using MTP1 antibody (TA378745) at 1:1000 dilution. | Secondary antibody: HRP Goat Anti-Rabbit IgG (H+L) at 1:10000 dilution. | Lysates/proteins: 25ug per lane. | Blocking buffer: 3% nonfat dry milk in TBST. | Detection: ECL Enhanced Kit. | Exposure time: 30s.