

Product datasheet for **TA378743S**

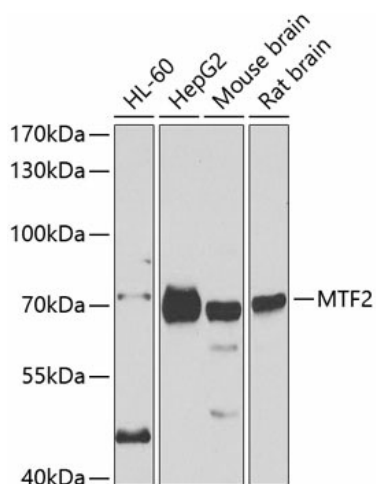
MTF2 Rabbit Polyclonal Antibody

Product data:

Product Type:	Primary Antibodies
Applications:	ELISA, WB
Recommended Dilution:	WB, 1:500 - 1:2000 ELISA, Recommended starting concentration is 1 µg/mL. Please optimize the concentration based on your specific assay requirements.
Reactivity:	Human, Mouse, Rat
Modifications:	Unmodified
Host:	Rabbit
Isotype:	IgG
Clonality:	Polyclonal
Formulation:	Buffer: PBS with 0.02% sodium azide, 50% glycerol, pH 7.3.
Concentration:	lot specific
Purification:	Affinity purification
Conjugation:	Unconjugated
Storage:	Store at -20°C. Avoid freeze / thaw cycles.
Stability:	Shelf life: one year from despatch.
Predicted Protein Size:	67kDa
Gene Name:	metal response element binding transcription factor 2
Database Link:	Entrez Gene 22823 Human Q9Y483
Background:	Enables methylated histone binding activity and transcription corepressor binding activity. Predicted to be involved in several processes, including regulation of histone H3-K27 methylation; regulation of transcription by RNA polymerase II; and segment specification. Predicted to act upstream of or within cellular response to leukemia inhibitory factor. Located in cytoplasm; focal adhesion; and nucleoplasm.
Synonyms:	dj976O13.2; hPCL2; M96; PCL2; RP5-976O13.1



[View online »](#)

Product images:


Western blot analysis of various lysates using MTF2 Rabbit pAb ([TA378743]) at 1:1000 dilution. Secondary antibody: HRP-conjugated Goat anti-Rabbit IgG (H+L) (AS014) at 1:10000 dilution. Lysates/proteins: 25µg per lane. Blocking buffer: 3% nonfat dry milk in TBST.