

Product datasheet for **TA378737**

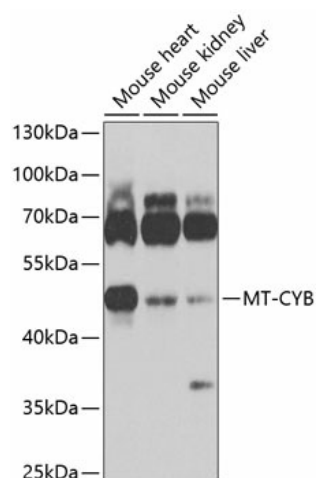
CYTB Rabbit Polyclonal Antibody

Product data:

| | |
|-------------------------|---|
| Product Type: | Primary Antibodies |
| Applications: | ELISA, WB |
| Recommended Dilution: | WB, 1:500 - 1:1000 ELISA, Recommended starting concentration is 1 µg/mL. Please optimize the concentration based on your specific assay requirements. |
| Reactivity: | Human, Mouse, Rat |
| Modifications: | Unmodified |
| Host: | Rabbit |
| Isotype: | IgG |
| Clonality: | Polyclonal |
| Formulation: | Buffer: PBS with 0.02% sodium azide, 50% glycerol, pH 7.3. |
| Concentration: | lot specific |
| Purification: | Affinity purification |
| Conjugation: | Unconjugated |
| Storage: | Store at -20°C. Avoid freeze / thaw cycles. |
| Stability: | Shelf life: one year from despatch. |
| Predicted Protein Size: | 43kDa |
| Gene Name: | cytochrome b, mitochondrial |
| Database Link: | Entrez Gene 17711 Mouse P00158 |
| Background: | Predicted to enable metal ion binding activity and ubiquinol-cytochrome-c reductase activity. Predicted to be involved in several processes, including electron transport coupled proton transport; mitochondrial electron transport, ubiquinol to cytochrome c; and response to glucagon. Located in membrane and mitochondrion. Is integral component of mitochondrial inner membrane. Human ortholog(s) of this gene implicated in ovarian carcinoma and urinary bladder cancer. Orthologous to human MT-CYB (mitochondrially encoded cytochrome b). |


[View online »](#)

Product images:



Western blot analysis of lysates from Mouse heart