

Product datasheet for **TA378733S**

MTCO3 (COX3) Rabbit Polyclonal Antibody

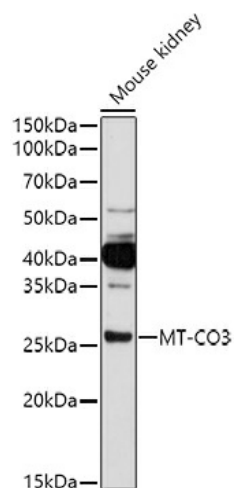
Product data:

Product Type:	Primary Antibodies
Applications:	ELISA, IHC, WB
Recommended Dilution:	WB, 1:500 - 1:1000 IHC-P, 1:100 - 1:200 ELISA, Recommended starting concentration is 1 µg/mL. Please optimize the concentration based on your specific assay requirements.
Reactivity:	Human, Rat, Mouse
Host:	Rabbit
Isotype:	IgG
Clonality:	Polyclonal
Formulation:	Buffer: PBS with 0.02% sodium azide, 50% glycerol, pH 7.3.
Concentration:	lot specific
Purification:	Affinity purification
Conjugation:	Unconjugated
Storage:	Store at -20°C. Avoid freeze / thaw cycles.
Stability:	Shelf life: one year from despatch.
Predicted Protein Size:	30kDa
Gene Name:	mitochondrially encoded cytochrome c oxidase III
Database Link:	P00414
Background:	Predicted to enable electron transfer activity and oxidoreduction-driven active transmembrane transporter activity. Involved in respiratory chain complex IV assembly. Part of respiratory chain complex IV. Implicated in MELAS syndrome.



[View online »](#)

Product images:



Western blot analysis of lysates from Mouse kidney