

Product datasheet for **TA378732**

MTCO2 (COX2) Rabbit Polyclonal Antibody

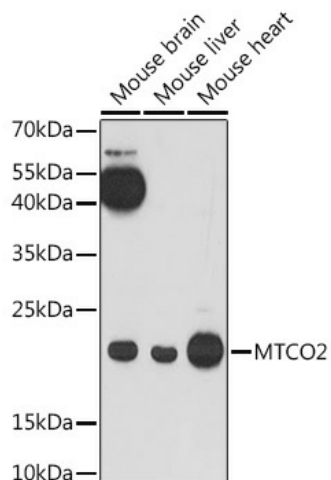
Product data:

| | |
|-------------------------|---|
| Product Type: | Primary Antibodies |
| Applications: | ICC/IF, IHC, WB |
| Recommended Dilution: | WB,1:500 - 1:2000 |
| Reactivity: | Human, Mouse, Rat |
| Modifications: | Unmodified |
| Host: | Rabbit |
| Isotype: | IgG |
| Clonality: | Polyclonal |
| Immunogen: | A synthetic peptide of human MTCO2 |
| Formulation: | Buffer: PBS with 0.02% sodium azide,50% glycerol,pH7.3. |
| Concentration: | lot specific |
| Purification: | Affinity purification |
| Conjugation: | Unconjugated |
| Storage: | Store at -20°C. Avoid freeze / thaw cycles. |
| Stability: | Shelf life: one year from despatch. |
| Predicted Protein Size: | 25kDa |
| Gene Name: | mitochondrially encoded cytochrome c oxidase II |
| Database Link: | Entrez Gene 4513 Human P00403 |
| Background: | MT-CO2 (mitochondrially encoded cytochrome c oxidase II) is a protein-coding gene. Diseases associated with MT-CO2 include cerebral aneurysms, and osteoblastoma. |



[View online »](#)

Product images:



Western blot analysis of extracts of various cell lines, using MTCO2 antibody (TA378732) at 1:1000 dilution. | Secondary antibody: HRP Goat Anti-Rabbit IgG (H+L) at 1:10000 dilution. | Lysates/proteins: 25ug per lane. | Blocking buffer: 3% nonfat dry milk in TBST. | Detection: ECL Basic Kit. | Exposure time: 10s.