

## Product datasheet for **TA378728**

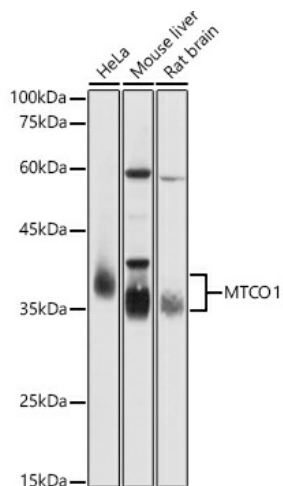
### **MTCO1 (COX1) Rabbit Polyclonal Antibody**

#### **Product data:**

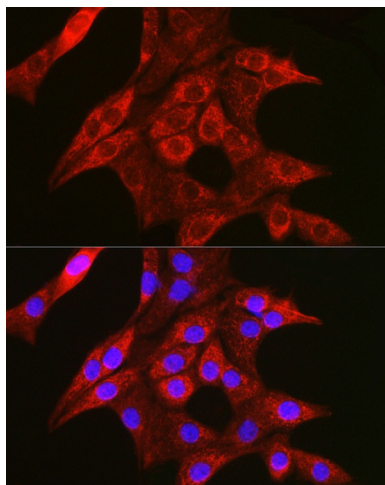
Product Type:	Primary Antibodies
Applications:	ICC/IF, IHC, WB
Recommended Dilution:	WB,1:500 - 1:2000 IHC,1:50 - 1:100 IF,1:50 - 1:100
Reactivity:	Human, Mouse, Rat
Host:	Rabbit
Isotype:	IgG
Clonality:	Polyclonal
Immunogen:	Recombinant protein of human MTCO1.
Formulation:	Buffer: PBS with 0.02% sodium azide,50% glycerol,pH7.3.
Concentration:	lot specific
Purification:	Affinity purification
Conjugation:	Unconjugated
Storage:	Store at -20°C. Avoid freeze / thaw cycles.
Stability:	Shelf life: one year from despatch.
Predicted Protein Size:	57kDa
Gene Name:	mitochondrially encoded cytochrome c oxidase I
Database Link:	<a href="#">P00395</a>
Background:	MT-CO1 (mitochondrially encoded cytochrome c oxidase I) is a protein-coding gene. Diseases associated with MT-CO1 include pthirus pubis infestation, and echinococcosis.



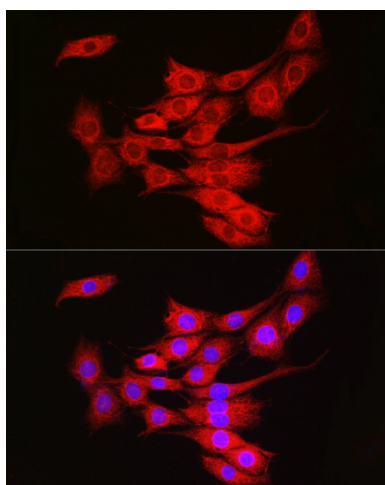
[View online »](#)

**Product images:**

Western blot analysis of extracts of various cell lines, using MTCO1 antibody (TA378728) at 1:10000 dilution. | Secondary antibody: HRP Goat Anti-Rabbit IgG (H+L) at 1:10000 dilution. | Lysates/proteins: 25ug per lane. | Blocking buffer: 3% nonfat dry milk in TBST. | Detection: ECL Basic Kit . | Exposure time: 1s.



Immunofluorescence analysis of NIH/3T3 cells using MTCO1 Rabbit pAb (TA378728) at dilution of 1:100 (40x lens). Blue: DAPI for nuclear staining.



Immunofluorescence analysis of PC-12 cells using MTCO1 Rabbit pAb (TA378728) at dilution of 1:100 (40x lens). Blue: DAPI for nuclear staining.