

Product datasheet for **TA378724**

ATP8 Rabbit Polyclonal Antibody

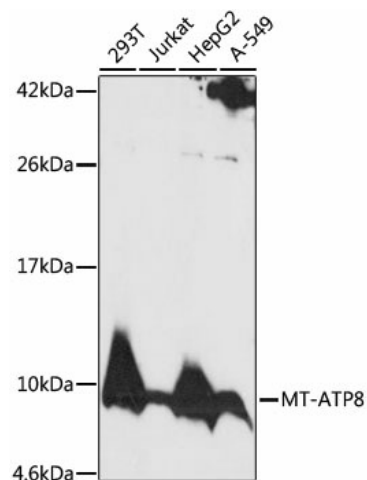
Product data:

Product Type:	Primary Antibodies
Applications:	ELISA, ICC/IF, IHC, WB
Recommended Dilution:	WB, 1:500 - 1:1000 IHC-P, 1:50 - 1:100 IF/ICC, 1:50 - 1:100 ELISA, Recommended starting concentration is 1 µg/mL. Please optimize the concentration based on your specific assay requirements.
Reactivity:	Human, Mouse, Rat
Host:	Rabbit
Isotype:	IgG
Clonality:	Polyclonal
Formulation:	Buffer: PBS with 0.05% proclin300, 50% glycerol, pH7.3.
Concentration:	lot specific
Purification:	Affinity purification
Conjugation:	Unconjugated
Storage:	Store at -20°C. Avoid freeze / thaw cycles.
Stability:	Shelf life: one year from despatch.
Predicted Protein Size:	8kDa
Gene Name:	mitochondrially encoded ATP synthase 8
Database Link:	P03928
Background:	Contributes to proton-transporting ATP synthase activity, rotational mechanism. Involved in mitochondrial ATP synthesis coupled proton transport. Part of mitochondrial proton-transporting ATP synthase complex. Implicated in multiple sclerosis and urinary bladder cancer.



[View online »](#)

Product images:



Western blot analysis of various lysates using MT-ATP8 Rabbit pAb (TA378724) at 1:1000 dilution. Secondary antibody: HRP-conjugated Goat anti-Rabbit IgG (H+L) at 1:10000 dilution. Lysates/proteins: 25µg per lane. Blocking buffer: 3% nonfat dry milk in TBST. Detection: ECL Basic Kit. Exposure time: 10s.

Immunohistochemistry analysis of paraffin-embedded Human liver tissue using MT-ATP8 Rabbit pAb (TA378724) at a dilution of 1:100 (40x lens). High pressure antigen retrieval was performed with 0.01 M citrate buffer (pH 6.0) prior to IHC staining.

Immunofluorescence analysis of HeLa cells using MT-ATP8 Rabbit pAb (TA378724) at dilution of 1:100. Secondary antibody: Cy3-conjugated Goat anti-Rabbit IgG (H+L) (AS007) at 1:500 dilution. Blue: DAPI for nuclear staining.