

## Product datasheet for **TA378719S**

### MTA3 Rabbit Polyclonal Antibody

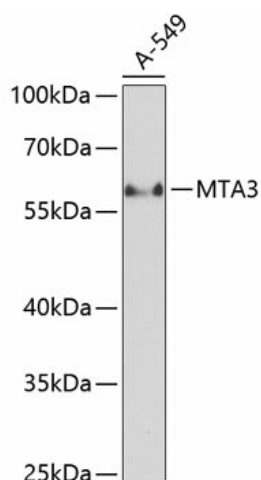
#### Product data:

Product Type:	Primary Antibodies
Applications:	ELISA, WB
Recommended Dilution:	WB, 1:500 - 1:2000 ELISA, Recommended starting concentration is 1 µg/mL. Please optimize the concentration based on your specific assay requirements.
Reactivity:	Human, Mouse
Modifications:	Unmodified
Host:	Rabbit
Isotype:	IgG
Clonality:	Polyclonal
Formulation:	Buffer: PBS with 0.02% sodium azide, 50% glycerol, pH 7.3.
Concentration:	lot specific
Purification:	Affinity purification
Conjugation:	Unconjugated
Storage:	Store at -20°C. Avoid freeze / thaw cycles.
Stability:	Shelf life: one year from despatch.
Predicted Protein Size:	68kDa
Gene Name:	metastasis associated 1 family member 3
Database Link:	<a href="#">Entrez Gene 57504 Human</a> <a href="#">Q9BTC8</a>
Background:	Predicted to enable histone deacetylase binding activity; transcription coactivator activity; and transcription corepressor activity. Involved in negative regulation of transcription, DNA-templated. Located in nucleoplasm. Part of NuRD complex.
Synonyms:	KIAA1266



[View online »](#)

## Product images:



Western blot analysis of lysates from A-549 cells