

Product datasheet for **TA378715S**

Metallothionein (MT2A) Rabbit Polyclonal Antibody

Product data:

Product Type:	Primary Antibodies
Applications:	ELISA, IHC, WB
Recommended Dilution:	WB, 1:500 - 1:2000 IHC-P, 1:50 - 1:200 ELISA, Recommended starting concentration is 1 µg/mL. Please optimize the concentration based on your specific assay requirements.
Reactivity:	Human, Mouse, Rat
Modifications:	Unmodified
Host:	Rabbit
Isotype:	IgG
Clonality:	Polyclonal
Formulation:	PBS with 0.05% proclin300, 50% glycerol, pH7.3.
Concentration:	lot specific
Purification:	Affinity purification
Conjugation:	Unconjugated
Storage:	Store at -20°C. Avoid freeze / thaw cycles.
Stability:	Shelf life: one year from despatch.
Predicted Protein Size:	6kDa
Gene Name:	metallothionein 2A
Database Link:	Entrez Gene 4502 Human P02795



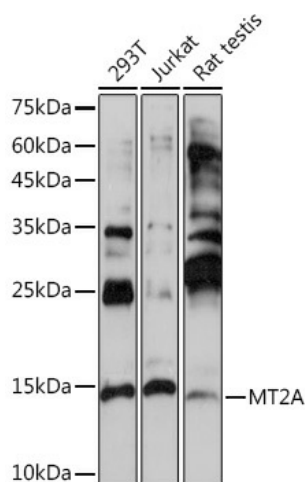
[View online »](#)

Background:

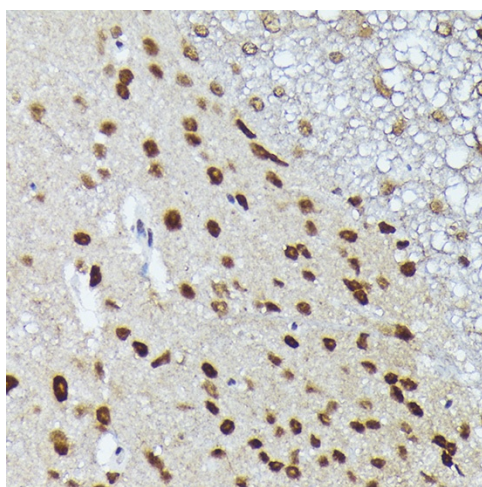
This gene is a member of the metallothionein family of genes. Proteins encoded by this gene family are low in molecular weight, are cysteine-rich, lack aromatic residues, and bind divalent heavy metal ions, altering the intracellular concentration of heavy metals in the cell. These proteins act as anti-oxidants, protect against hydroxyl free radicals, are important in homeostatic control of metal in the cell, and play a role in detoxification of heavy metals. The encoded protein interacts with the protein encoded by the homeobox containing 1 gene in some cell types, controlling intracellular zinc levels, affecting apoptotic and autophagy pathways. Some polymorphisms in this gene are associated with an increased risk of cancer.

Synonyms:

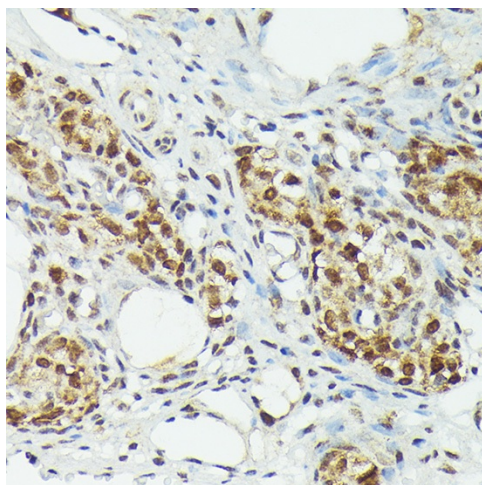
CES1; Metallothionein-2A; Metallothionein-II; MT-2; MT-II; MT2

Product images:


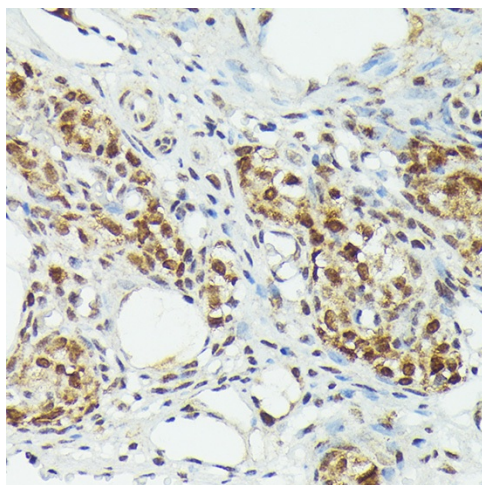
Western blot analysis of various lysates using MT2A Rabbit pAb ([TA378715]) at 1:1000 dilution. Secondary antibody: HRP-conjugated Goat anti-Rabbit IgG (H+L) (AS014) at 1:10000 dilution. Lysates/proteins: 25µg per lane. Blocking buffer: 3% nonfat dry milk in TBST. Detection: ECL Basic Kit (RM00020). Exposure time: 30s.



Immunohistochemistry analysis of paraffin-embedded Human liver cancer using MT2A Rabbit pAb ([TA378715]) at dilution of 1:100 (40x lens). High pressure antigen retrieval performed with 0.01M Citrate Buffer (pH 6.0) prior to IHC staining.



Immunohistochemistry analysis of paraffin-embedded Mouse spinal cord using MT2A Rabbit pAb ([TA378715]) at dilution of 1:100 (40x lens). High pressure antigen retrieval performed with 0.01M Citrate Bufferr (pH 6.0) prior to IHC staining.



Immunohistochemistry analysis of paraffin-embedded Rat ovary using MT2A Rabbit pAb ([TA378715]) at dilution of 1:100 (40x lens). High pressure antigen retrieval performed with 0.01M Citrate Bufferr (pH 6.0) prior to IHC staining.