

Product datasheet for **TA378710S**

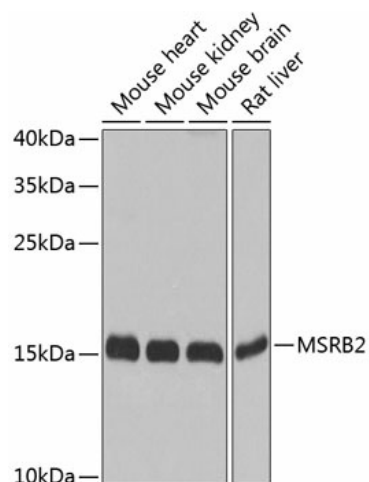
MSRB2 Rabbit Polyclonal Antibody

Product data:

Product Type:	Primary Antibodies
Applications:	ELISA, IHC, WB
Recommended Dilution:	WB, 1:500 - 1:2000 IHC-P, 1:50 - 1:200 ELISA, Recommended starting concentration is 1 µg/mL. Please optimize the concentration based on your specific assay requirements.
Reactivity:	Human, Mouse, Rat
Modifications:	Unmodified
Host:	Rabbit
Isotype:	IgG
Clonality:	Polyclonal
Formulation:	Buffer: PBS with 0.02% sodium azide, 50% glycerol, pH 7.3.
Concentration:	lot specific
Purification:	Affinity purification
Conjugation:	Unconjugated
Storage:	Store at -20°C. Avoid freeze / thaw cycles.
Stability:	Shelf life: one year from despatch.
Predicted Protein Size:	20kDa
Gene Name:	methionine sulfoxide reductase B2
Database Link:	Entrez Gene 22921 Human Q9Y3D2
Background:	Predicted to enable actin binding activity; peptide-methionine (R)-S-oxide reductase activity; and zinc ion binding activity. Predicted to be involved in actin filament polymerization and protein repair. Predicted to be located in mitochondrion. Predicted to be active in cytoplasm.
Synonyms:	CBS-1; CBS1; CGI-131; MGC26104; MSRB; PILB


[View online »](#)

Product images:



Western blot analysis of various lysates using MSRB2 Rabbit pAb ([TA378710S]) at 1:1000 dilution.

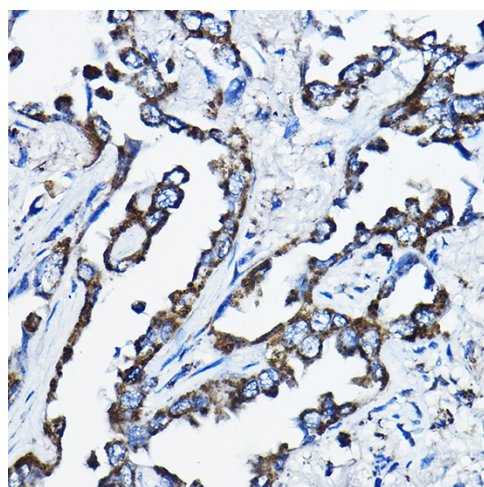
Secondary antibody: HRP-conjugated Goat anti-Rabbit IgG (H+L) (AS014) at 1:10000 dilution.

Lysates/proteins: 25µg per lane.

Blocking buffer: 3% nonfat dry milk in TBST.

Detection: ECL Basic Kit (RM00020).

Exposure time: 10s.



Immunohistochemistry analysis of paraffin-embedded Human lung cancer using MSRB2 Rabbit pAb ([TA378710S]) at dilution of 1:200 (40x lens). High pressure antigen retrieval performed with 0.01M Citrate Bufferr (pH 6.0) prior to IHC staining.