

Product datasheet for **TA378699**

MSL2L1 (MSL2) Rabbit Polyclonal Antibody

Product data:

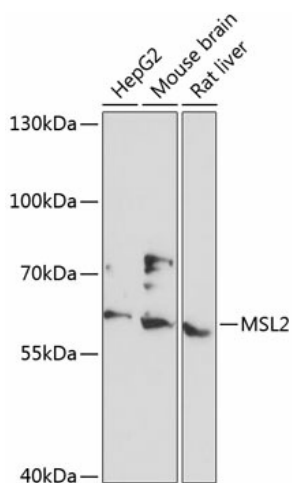
Product Type:	Primary Antibodies
Applications:	WB
Recommended Dilution:	WB,1:500 - 1:2000
Reactivity:	Human, Mouse, Rat
Modifications:	Unmodified
Host:	Rabbit
Isotype:	IgG
Clonality:	Polyclonal
Immunogen:	Recombinant fusion protein containing a sequence corresponding to amino acids 328-577 of human MSL2 (NP_060603.2).
Formulation:	Buffer: PBS with 0.02% sodium azide,50% glycerol,pH7.3.
Concentration:	lot specific
Purification:	Affinity purification
Conjugation:	Unconjugated
Storage:	Store at -20°C. Avoid freeze / thaw cycles.
Stability:	Shelf life: one year from despatch.
Predicted Protein Size:	54kDa/62kDa
Gene Name:	male-specific lethal 2 homolog (Drosophila)
Database Link:	Entrez Gene 55167 Human Q9HCI7
Background:	Component of histone acetyltransferase complex responsible for the majority of histone H4 acetylation at lysine 16 which is implicated in the formation of higher-order chromatin structure. Acts as an E3 ubiquitin ligase that promotes monoubiquitination of histone H2B at 'Lys-35' (H2BK34Ub, but not that of H2A. This activity is greatly enhanced by heterodimerization with MSL1. H2B ubiquitination in turn stimulates histone H3 methylation at 'Lys-4' (H3K4me and 'Lys-79' (H3K79me and leads to gene activation, including that of HOXA9 and MEIS1.



[View online »](#)

Synonyms: FLJ10546; FLJ54913; KIAA1585; MSL-2; MSL2L1; RNF184

Product images:



Western blot analysis of extracts of various cell lines, using MSL2 antibody (TA378699) at 1:3000 dilution. | Secondary antibody: HRP Goat Anti-Rabbit IgG (H+L) at 1:10000 dilution. | Lysates/proteins: 25ug per lane. | Blocking buffer: 3% nonfat dry milk in TBST. | Detection: ECL Basic Kit. | Exposure time: 10s.