

## Product datasheet for **TA378698**

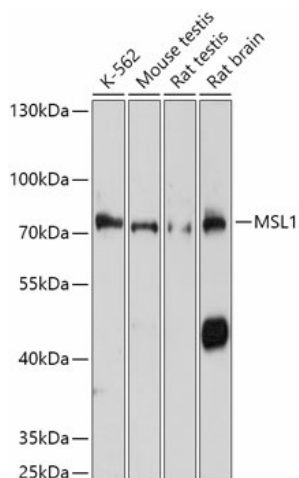
### MSL1 Rabbit Polyclonal Antibody

#### Product data:

|                         |  |
|-------------------------|--|
| Product Type:           | Primary Antibodies   |
| Applications:           | ELISA, WB  |
| Recommended Dilution:   | WB, 1:500 - 1:2000<br>ELISA, Recommended starting concentration is 1 µg/mL. Please optimize the concentration based on your specific assay requirements. |
| Reactivity:             | Human, Mouse, Rat  |
| Modifications:          | Unmodified   |
| Host:                   | Rabbit   |
| Isotype:                | IgG  |
| Clonality:              | Polyclonal   |
| Formulation:            | Buffer: PBS with 0.01% thimerosal, 50% glycerol, pH7.3.  |
| Concentration:          | lot specific   |
| Purification:           | Affinity purification  |
| Conjugation:            | Unconjugated   |
| Storage:                | Store at -20°C. Avoid freeze / thaw cycles.  |
| Stability:              | Shelf life: one year from despatch.  |
| Predicted Protein Size: | 67kDa  |
| Gene Name:              | male specific lethal 1 homolog   |
| Database Link:          | <a href="#">Entrez Gene 339287 Human Q68DK7</a>  |
| Background:             | Predicted to enable chromatin binding activity. Involved in histone H4-K16 acetylation. Located in nucleoplasm. Part of MSL complex.                     |
| Synonyms:               | DKFZp686J17211; DKFZp686P24239; hampin; hMSL1; MGC141861; MSL-1; MSL1L1  |



[View online »](#)

**Product images:**


Western blot analysis of various lysates using MSL1 Rabbit pAb (TA378698) at 1:1000 dilution. Secondary antibody: HRP-conjugated Goat anti-Rabbit IgG (H+L) (AS014) at 1:10000 dilution. Lysates/proteins: 25µg per lane. Blocking buffer: 3% nonfat dry milk in TBST. Detection: ECL Basic Kit (RM00020). Exposure time: 10s.