

Product datasheet for **TA378690**

Ms4a4a Rabbit Polyclonal Antibody

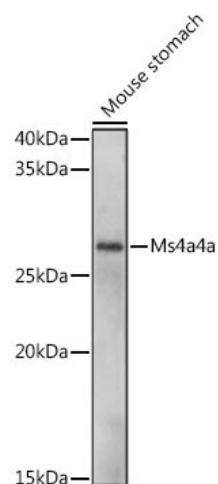
Product data:

Product Type:	Primary Antibodies
Applications:	WB
Recommended Dilution:	WB,1:500 - 1:2000
Reactivity:	Mouse
Host:	Rabbit
Isotype:	IgG
Clonality:	Polyclonal
Immunogen:	Recombinant protein of human Ms4a4a.
Formulation:	Buffer: PBS with 0.02% sodium azide,50% glycerol,pH7.3.
Concentration:	lot specific
Purification:	Affinity purification
Conjugation:	Unconjugated
Storage:	Store at -20°C. Avoid freeze / thaw cycles.
Stability:	Shelf life: one year from despatch.
Gene Name:	membrane-spanning 4-domains, subfamily A, member 4A
Database Link:	Entrez Gene 666907 Mouse
Synonyms:	4SPAN1; CD20-L1; CD20L1; HDCME31P; MGC22311; MS4A4; MS4A7



[View online »](#)

Product images:



Western blot analysis of extracts of Mouse stomach, using Ms4a4a antibody (TA378690) at 1:1000 dilution. | Secondary antibody: HRP Goat Anti-Rabbit IgG (H+L) at 1:10000 dilution. | Lysates/proteins: 25ug per lane. | Blocking buffer: 3% nonfat dry milk in TBST. | Detection: ECL Basic Kit . | Exposure time: 10s.