

Product datasheet for **TA378666S**

Mrpl55 Rabbit Polyclonal Antibody

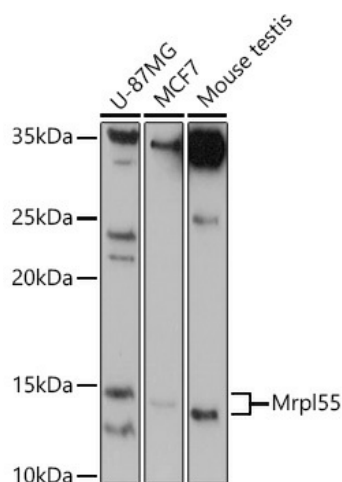
Product data:

Product Type:	Primary Antibodies
Applications:	ELISA, WB
Recommended Dilution:	WB, 1:500 - 1:2000 ELISA, Recommended starting concentration is 1 µg/mL. Please optimize the concentration based on your specific assay requirements.
Reactivity:	Human, Mouse
Host:	Rabbit
Isotype:	IgG
Clonality:	Polyclonal
Formulation:	Buffer: PBS with 0.02% sodium azide, 50% glycerol, pH 7.3.
Concentration:	lot specific
Purification:	Affinity purification
Conjugation:	Unconjugated
Storage:	Store at -20°C. Avoid freeze / thaw cycles.
Stability:	Shelf life: one year from despatch.
Predicted Protein Size:	15kDa
Gene Name:	mitochondrial ribosomal protein L55
Database Link:	Entrez Gene 67212 Mouse Q9CZ83
Background:	Predicted to be a structural constituent of ribosome. Predicted to be involved in translation. Located in mitochondrion. Is expressed in several structures, including early conceptus; gonad; heart; liver; and metanephros. Orthologous to human MRPL55 (mitochondrial ribosomal protein L55).
Synonyms:	AAVG5835; DKFZp686D1387; L55mt; L55nt; MGC61802; MRP-L55; OTTHUMP00000036076; OTTHUMP00000036077; OTTHUMP00000037490; OTTHUMP00000037493; OTTHUMP00000037494; OTTHUMP00000037495; OTTHUMP00000037496; OTTHUMP00000037497; OTTHUMP00000037498; OTTHUMP00000037499; OTTHUMP00000037500; OTTHUMP00000037501; OTTHUMP00000037502; PRO19675



[View online »](#)

Product images:



Western blot analysis of various lysates using Mrpl55 Rabbit pAb ([TA378666]) at 1:1000 dilution.

Secondary antibody: HRP-conjugated Goat anti-Rabbit IgG (H+L) (AS014) at 1:10000 dilution.

Lysates/proteins: 25µg per lane.

Blocking buffer: 3% nonfat dry milk in TBST.

Detection: ECL Basic Kit (RM00020).

Exposure time: 90s.