

Product datasheet for **TA378666**

Mrpl55 Rabbit Polyclonal Antibody

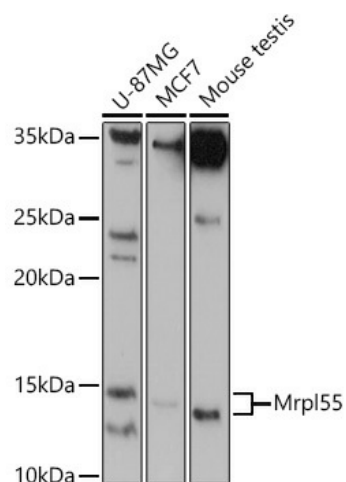
Product data:

Product Type:	Primary Antibodies
Applications:	WB
Recommended Dilution:	WB,1:500 - 1:2000
Reactivity:	Human, Mouse
Host:	Rabbit
Isotype:	IgG
Clonality:	Polyclonal
Immunogen:	Recombinant protein of human Mrpl55.
Formulation:	Buffer: PBS with 0.02% sodium azide,50% glycerol,pH7.3.
Concentration:	lot specific
Purification:	Affinity purification
Conjugation:	Unconjugated
Storage:	Store at -20°C. Avoid freeze / thaw cycles.
Stability:	Shelf life: one year from despatch.
Predicted Protein Size:	15kDa
Gene Name:	mitochondrial ribosomal protein L55
Database Link:	Entrez Gene 67212 Mouse Q9CZ83
Synonyms:	AAVG5835; DKFZp686D1387; L55mt; L55nt; MGC61802; MRP-L55; OTTHUMP00000036076; OTTHUMP00000036077; OTTHUMP00000037490; OTTHUMP00000037493; OTTHUMP00000037494; OTTHUMP00000037495; OTTHUMP00000037496; OTTHUMP00000037497; OTTHUMP00000037498; OTTHUMP00000037499; OTTHUMP00000037500; OTTHUMP00000037501; OTTHUMP00000037502; PRO19675



[View online »](#)

Product images:



Western blot analysis of extracts of various cell lines, using Mrpl55 antibody (TA378666) at 1:1000 dilution. | Secondary antibody: HRP Goat Anti-Rabbit IgG (H+L) at 1:10000 dilution. | Lysates/proteins: 25ug per lane. | Blocking buffer: 3% nonfat dry milk in TBST. | Detection: ECL Basic Kit . | Exposure time: 90s.