

Product datasheet for **TA378665S**

MRPL55 Rabbit Polyclonal Antibody

Product data:

Product Type:	Primary Antibodies
Applications:	ELISA, WB
Recommended Dilution:	WB, 1:500 - 1:2000 ELISA, Recommended starting concentration is 1 µg/mL. Please optimize the concentration based on your specific assay requirements.
Reactivity:	Human
Host:	Rabbit
Isotype:	IgG
Clonality:	Polyclonal
Formulation:	Buffer: PBS with 0.02% sodium azide, 50% glycerol, pH 7.3.
Concentration:	lot specific
Purification:	Affinity purification
Conjugation:	Unconjugated
Storage:	Store at -20°C. Avoid freeze / thaw cycles.
Stability:	Shelf life: one year from despatch.
Predicted Protein Size:	15kDa
Gene Name:	mitochondrial ribosomal protein L55
Database Link:	Entrez Gene 128308 Human Q7Z7F7



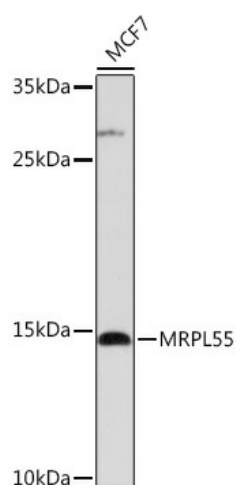
[View online »](#)

Background:

Mammalian mitochondrial ribosomal proteins are encoded by nuclear genes and help in protein synthesis within the mitochondrion. Mitochondrial ribosomes (mitoribosomes) consist of a small 28S subunit and a large 39S subunit. They have an estimated 75% protein to rRNA composition compared to prokaryotic ribosomes, where this ratio is reversed. Another difference between mammalian mitoribosomes and prokaryotic ribosomes is that the latter contain a 5S rRNA. Among different species, the proteins comprising the mitoribosome differ greatly in sequence, and sometimes in biochemical properties, which prevents easy recognition by sequence homology. This gene encodes a 39S subunit protein. Multiple transcript variants encoding two different isoforms were identified through sequence analysis.

Synonyms:

AAVG5835; DKFZp686D1387; L55mt; L55nt; MGC61802; MRP-L55; OTTHUMP00000036076; OTTHUMP00000036077; OTTHUMP00000037490; OTTHUMP00000037493; OTTHUMP00000037494; OTTHUMP00000037495; OTTHUMP00000037496; OTTHUMP00000037497; OTTHUMP00000037498; OTTHUMP00000037499; OTTHUMP00000037500; OTTHUMP00000037501; OTTHUMP00000037502; PRO19675

Product images:


Western blot analysis of lysates from MCF7 cells