

## Product datasheet for **TA378665**

### MRPL55 Rabbit Polyclonal Antibody

#### Product data:

Product Type:	Primary Antibodies
Applications:	WB
Recommended Dilution:	WB,1:500 - 1:2000
Reactivity:	Human
Host:	Rabbit
Isotype:	IgG
Clonality:	Polyclonal
Immunogen:	Recombinant protein of human MRPL55.
Formulation:	Buffer: PBS with 0.02% sodium azide,50% glycerol,pH7.3.
Concentration:	lot specific
Purification:	Affinity purification
Conjugation:	Unconjugated
Storage:	Store at -20°C. Avoid freeze / thaw cycles.
Stability:	Shelf life: one year from despatch.
Predicted Protein Size:	15kDa
Gene Name:	mitochondrial ribosomal protein L55
Database Link:	<a href="#">Entrez Gene 128308 Human Q7Z7F7</a>

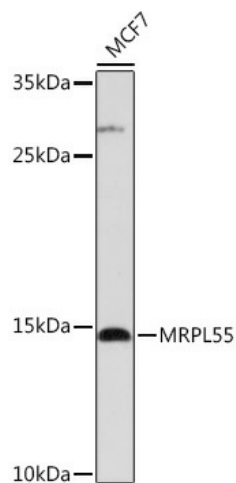
**Background:** Mammalian mitochondrial ribosomal proteins are encoded by nuclear genes and help in protein synthesis within the mitochondrion. Mitochondrial ribosomes (mitoribosomes) consist of a small 28S subunit and a large 39S subunit. They have an estimated 75% protein to rRNA composition compared to prokaryotic ribosomes, where this ratio is reversed. Another difference between mammalian mitoribosomes and prokaryotic ribosomes is that the latter contain a 5S rRNA. Among different species, the proteins comprising the mitoribosome differ greatly in sequence, and sometimes in biochemical properties, which prevents easy recognition by sequence homology. This gene encodes a 39S subunit protein. Multiple transcript variants encoding two different isoforms were identified through sequence analysis.



[View online »](#)

**Synonyms:**

AAVG5835; DKFZp686D1387; L55mt; L55nt; MGC61802; MRP-L55; OTTHUMP00000036076; OTTHUMP00000036077; OTTHUMP00000037490; OTTHUMP00000037493; OTTHUMP00000037494; OTTHUMP00000037495; OTTHUMP00000037496; OTTHUMP00000037497; OTTHUMP00000037498; OTTHUMP00000037499; OTTHUMP00000037500; OTTHUMP00000037501; OTTHUMP00000037502; PRO19675

**Product images:**

Western blot analysis of extracts of MCF7 cells, using MRPL55 Rabbit pAb (TA378665) at 1:1000 dilution. | Secondary antibody: HRP Goat Anti-Rabbit IgG (H+L) at 1:10000 dilution. | Lysates/proteins: 25ug per lane. | Blocking buffer: 3% nonfat dry milk in TBST. | Detection: ECL Basic Kit . | Exposure time: 1s.