

## Product datasheet for **TA378656**

### MRPL43 Rabbit Polyclonal Antibody

#### Product data:

Product Type:	Primary Antibodies
Applications:	ICC/IF, WB
Recommended Dilution:	WB,1:500 - 1:2000 IF,1:50 - 1:200
Reactivity:	Human, Mouse, Rat
Modifications:	Unmodified
Host:	Rabbit
Isotype:	IgG
Clonality:	Polyclonal
Immunogen:	Recombinant fusion protein containing a sequence corresponding to amino acids 80-155 of human MRPL43 (NP_789762.1).
Formulation:	Buffer: PBS with 0.02% sodium azide,50% glycerol,pH7.3.
Concentration:	lot specific
Purification:	Affinity purification
Conjugation:	Unconjugated
Storage:	Store at -20°C. Avoid freeze / thaw cycles.
Stability:	Shelf life: one year from despatch.
Gene Name:	mitochondrial ribosomal protein L43
Database Link:	<a href="#">Entrez Gene 84545 Human</a> <a href="#">Q8N983</a>



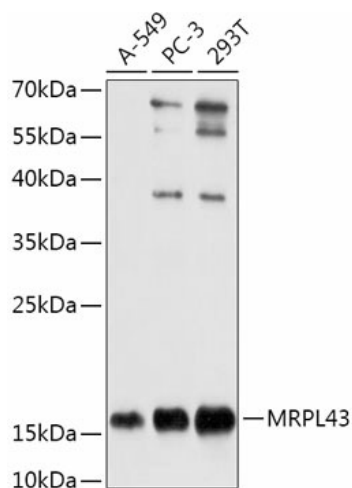
[View online »](#)

**Background:**

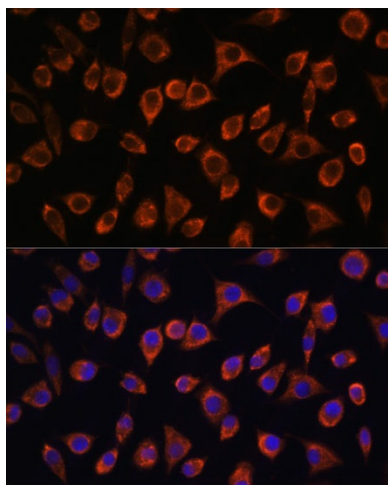
Mammalian mitochondrial ribosomal proteins are encoded by nuclear genes and help in protein synthesis within the mitochondrion. Mitochondrial ribosomes (mitoribosomes) consist of a small 28S subunit and a large 39S subunit. They have an estimated 75% protein to rRNA composition compared to prokaryotic ribosomes, where this ratio is reversed. Another difference between mammalian mitoribosomes and prokaryotic ribosomes is that the latter contain a 5S rRNA. Among different species, the proteins comprising the mitoribosome differ greatly in sequence, and sometimes in biochemical properties, which prevents easy recognition by sequence homology. This gene encodes a 39S subunit protein. This gene and the gene for a semaphorin class 4 protein (SEMA4G) overlap at map location 10q24.31 and are transcribed in opposite directions. Sequence analysis identified multiple transcript variants encoding at least four different protein isoforms. [provided by RefSeq, Jul 2008]

**Synonyms:**

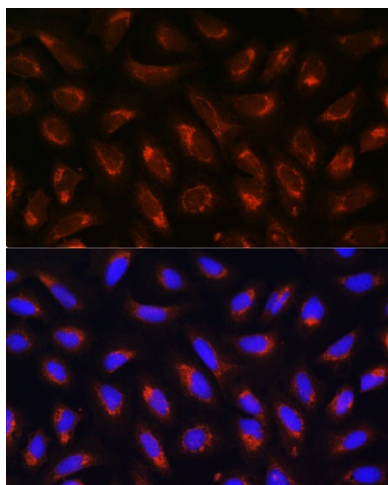
bMRP36a; L43mt; MGC17989; MGC48892; MRP-L43; OTTHUMP00000020310

**Product images:**

Western blot analysis of extracts of various cell lines, using MRPL43 antibody (TA378656) at 1:1000 dilution. | Secondary antibody: HRP Goat Anti-Rabbit IgG (H+L) at 1:10000 dilution. | Lysates/proteins: 25ug per lane. | Blocking buffer: 3% nonfat dry milk in TBST. | Detection: ECL Basic Kit. | Exposure time: 10s.



Immunofluorescence analysis of L929 cells using MRPL43 antibody (TA378656) at dilution of 1:100. Blue: DAPI for nuclear staining.



Immunofluorescence analysis of U-2 OS cells using MRPL43 antibody (TA378656) at dilution of 1:100. Blue: DAPI for nuclear staining.