

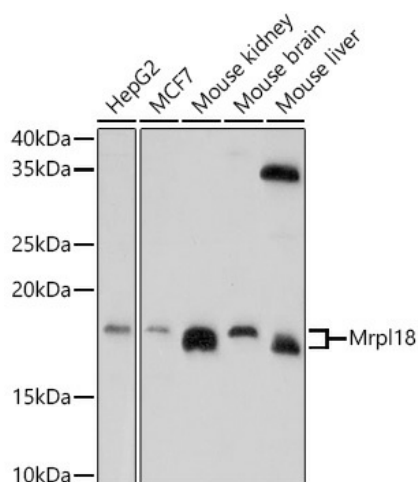
## Product datasheet for **TA378643S**

### Mrpl18 Rabbit Polyclonal Antibody

#### Product data:

Product Type:	Primary Antibodies
Applications:	ELISA, WB
Recommended Dilution:	WB, 1:500 - 1:2000 ELISA, Recommended starting concentration is 1 µg/mL. Please optimize the concentration based on your specific assay requirements.
Reactivity:	Human, Mouse
Host:	Rabbit
Isotype:	IgG
Clonality:	Polyclonal
Formulation:	Buffer: PBS with 0.02% sodium azide, 50% glycerol, pH 7.3.
Concentration:	lot specific
Purification:	Affinity purification
Conjugation:	Unconjugated
Storage:	Store at -20°C. Avoid freeze / thaw cycles.
Stability:	Shelf life: one year from despatch.
Predicted Protein Size:	21kDa
Gene Name:	mitochondrial ribosomal protein L18
Database Link:	<a href="#">Entrez Gene 67681 Mouse</a> <a href="#">Q9CQL5</a>
Background:	Predicted to enable 5S rRNA binding activity. Predicted to be involved in rRNA import into mitochondrion. Located in mitochondrion. Is expressed in several structures, including brain; connective tissue; early conceptus; genitourinary system; and gut. Orthologous to human MRPL18 (mitochondrial ribosomal protein L18).
Synonyms:	HSPC071; L18mt; MRP-L18

[View online »](#)

**Product images:**


Western blot analysis of various lysates using Mrpl18 Rabbit pAb ([TA378643]) at 1:1000 dilution.

Secondary antibody: HRP-conjugated Goat anti-Rabbit IgG (H+L) (AS014) at 1:10000 dilution.

Lysates/proteins: 25µg per lane.

Blocking buffer: 3% nonfat dry milk in TBST.

Detection: ECL Enhanced Kit (RM00021).

Exposure time: 180s.