

## Product datasheet for **TA378636**

### Mitochondrial ribosomal protein L11 (MRPL11) Rabbit Polyclonal Antibody

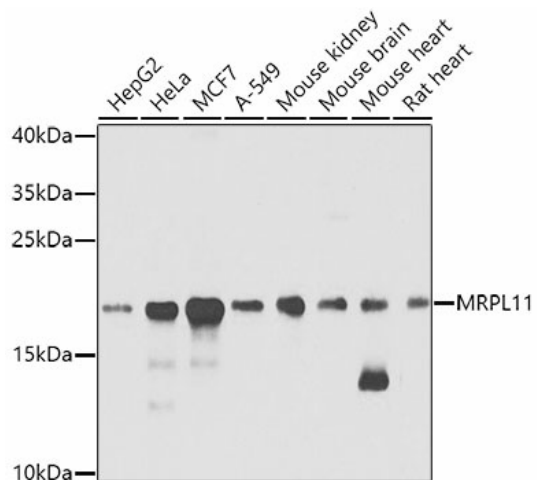
#### Product data:

Product Type:	Primary Antibodies
Applications:	WB
Recommended Dilution:	WB,1:500 - 1:2000
Reactivity:	Human, Mouse, Rat
Modifications:	Unmodified
Host:	Rabbit
Isotype:	IgG
Clonality:	Polyclonal
Immunogen:	Recombinant fusion protein containing a sequence corresponding to amino acids 1-192 of human MRPL11 (NP_057134.1).
Formulation:	Buffer: PBS with 0.02% sodium azide,50% glycerol,pH7.3.
Concentration:	lot specific
Purification:	Affinity purification
Conjugation:	Unconjugated
Storage:	Store at -20°C. Avoid freeze / thaw cycles.
Stability:	Shelf life: one year from despatch.
Predicted Protein Size:	18kDa/19kDa/20kDa
Gene Name:	mitochondrial ribosomal protein L11
Database Link:	<a href="#">Entrez Gene 65003 Human Q9Y3B7</a>
Background:	This nuclear gene encodes a 39S subunit component of the mitochondrial ribosome. Alternative splicing results in multiple transcript variants. Pseudogenes for this gene are found on chromosomes 5 and 12.
Synonyms:	CGI-113; L11MT; MGC111024; MRP-L11



[View online »](#)

## Product images:



Western blot analysis of extracts of various cell lines, using MRPL11 antibody (TA378636) at 1:1000 dilution. | Secondary antibody: HRP Goat Anti-Rabbit IgG (H+L) at 1:10000 dilution. | Lysates/proteins: 25ug per lane. | Blocking buffer: 3% nonfat dry milk in TBST. | Detection: ECL Basic Kit. | Exposure time: 40s.