

## Product datasheet for **TA378634S**

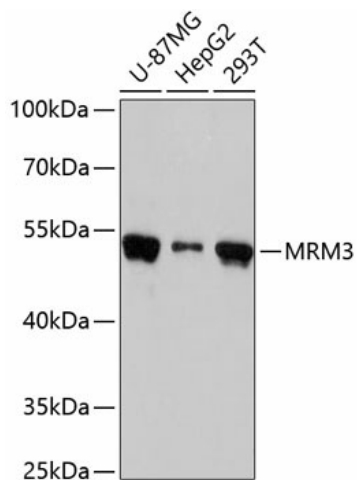
### **RNMTL1 (MRM3) Rabbit Polyclonal Antibody**

#### **Product data:**

Product Type:	Primary Antibodies
Applications:	ELISA, WB
Recommended Dilution:	WB, 1:500 - 1:2000 ELISA, Recommended starting concentration is 1 µg/mL. Please optimize the concentration based on your specific assay requirements.
Reactivity:	Human
Modifications:	Unmodified
Host:	Rabbit
Isotype:	IgG
Clonality:	Polyclonal
Formulation:	Buffer: PBS with 0.02% sodium azide, 50% glycerol, pH 7.3.
Concentration:	lot specific
Purification:	Affinity purification
Conjugation:	Unconjugated
Storage:	Store at -20°C. Avoid freeze / thaw cycles.
Stability:	Shelf life: one year from despatch.
Predicted Protein Size:	47kDa
Gene Name:	mitochondrial rRNA methyltransferase 3
Database Link:	<a href="#">Entrez Gene 55178 Human</a> <a href="#">Q9HC36</a>
Background:	Efficient translation of mitochondrial-derived transcripts requires proper assembly of the large subunit of the mitochondrial ribosome. Central to the biogenesis of this large subunit is the A-loop of mitochondrial 16S rRNA, which is modified by three rRNA methyltransferases located near mtDNA nucleoids. The protein encoded by this gene methylates G(1370) of 16S rRNA, and this modification is necessary for proper ribosomal large subunit assembly. Two transcript variants encoding different isoforms have been found for this gene.



[View online »](#)

**Product images:**


Western blot analysis of various lysates using MRM3 Rabbit pAb (TA378634) at 1:3000 dilution. Secondary antibody: HRP-conjugated Goat anti-Rabbit IgG (H+L) (AS014) at 1:10000 dilution. Lysates/proteins: 25µg per lane. Blocking buffer: 3% nonfat dry milk in TBST. Detection: ECL Basic Kit (RM00020). Exposure time: 30s.