

## Product datasheet for **TA378634**

### **RNMTL1 (MRM3) Rabbit Polyclonal Antibody**

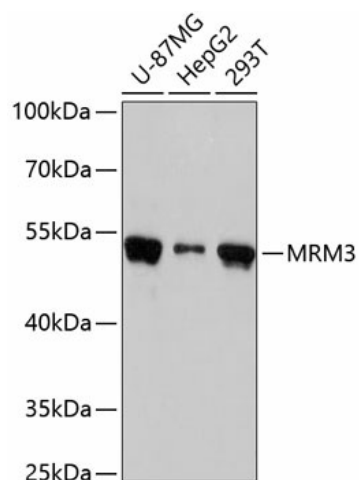
#### **Product data:**

<b>Product Type:</b>	Primary Antibodies
<b>Applications:</b>	WB
<b>Recommended Dilution:</b>	WB,1:500 - 1:2000
<b>Reactivity:</b>	Human
<b>Modifications:</b>	Unmodified
<b>Host:</b>	Rabbit
<b>Isotype:</b>	IgG
<b>Clonality:</b>	Polyclonal
<b>Immunogen:</b>	Recombinant fusion protein containing a sequence corresponding to amino acids 1-420 of human MRM3 (NP_060616.1).
<b>Formulation:</b>	Buffer: PBS with 0.02% sodium azide,50% glycerol,pH7.3.
<b>Concentration:</b>	lot specific
<b>Purification:</b>	Affinity purification
<b>Conjugation:</b>	Unconjugated
<b>Storage:</b>	Store at -20°C. Avoid freeze / thaw cycles.
<b>Stability:</b>	Shelf life: one year from despatch.
<b>Predicted Protein Size:</b>	47kDa
<b>Gene Name:</b>	mitochondrial rRNA methyltransferase 3
<b>Database Link:</b>	<a href="#">Entrez Gene 55178 Human Q9HC36</a>
<b>Background:</b>	Efficient translation of mitochondrial-derived transcripts requires proper assembly of the large subunit of the mitochondrial ribosome. Central to the biogenesis of this large subunit is the A-loop of mitochondrial 16S rRNA, which is modified by three rRNA methyltransferases located near mtDNA nucleoids. The protein encoded by this gene methylates G(1370) of 16S rRNA, and this modification is necessary for proper ribosomal large subunit assembly. Two transcript variants encoding different isoforms have been found for this gene.



[View online »](#)

## Product images:



Western blot analysis of extracts of various cell lines, using MRM3 antibody (TA378634) at 1:3000 dilution. | Secondary antibody: HRP Goat Anti-Rabbit IgG (H+L) at 1:10000 dilution. | Lysates/proteins: 25ug per lane. | Blocking buffer: 3% nonfat dry milk in TBST. | Detection: ECL Basic Kit . | Exposure time: 30s.