

Product datasheet for **TA378632**

MRI1 Rabbit Polyclonal Antibody

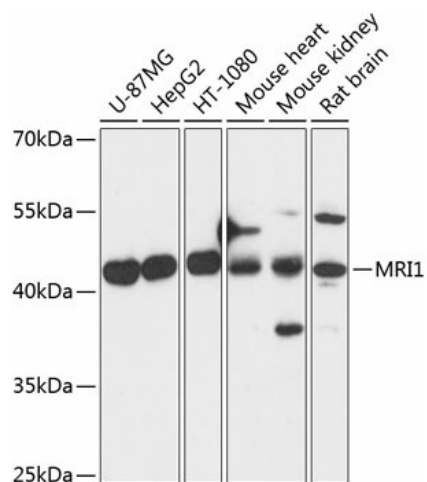
Product data:

Product Type:	Primary Antibodies
Applications:	WB
Recommended Dilution:	WB,1:500 - 1:2000
Reactivity:	Human, Mouse, Rat
Modifications:	Unmodified
Host:	Rabbit
Isotype:	IgG
Clonality:	Polyclonal
Immunogen:	Recombinant fusion protein containing a sequence corresponding to amino acids 1-369 of human MRI1 (NP_001026897.1).
Formulation:	Buffer: PBS with 0.02% sodium azide,50% glycerol,pH7.3.
Concentration:	lot specific
Purification:	Affinity purification
Conjugation:	Unconjugated
Storage:	Store at -20°C. Avoid freeze / thaw cycles.
Stability:	Shelf life: one year from despatch.
Predicted Protein Size:	34kDa/39kDa
Gene Name:	methylthioribose-1-phosphate isomerase 1
Database Link:	Entrez Gene 84245 Human Q9BV20
Background:	This enzyme functions in the methionine salvage pathway by catalyzing the interconversion of methylthioribose-1-phosphate and methylthioribulose-1-phosphate. Elevated expression of the encoded protein is associated with metastatic melanoma and this protein promotes melanoma cell invasion independent of its enzymatic activity. Mutations in this gene may be associated with vanishing white matter disease (VMWD).
Synonyms:	M1Pi; MGC3207; MTNA; Ypr118w



[View online »](#)

Product images:



Western blot analysis of extracts of various cell lines, using MRI1 antibody (TA378632) at 1:3000 dilution. | Secondary antibody: HRP Goat Anti-Rabbit IgG (H+L) at 1:10000 dilution. | Lysates/proteins: 25ug per lane. | Blocking buffer: 3% nonfat dry milk in TBST. | Detection: ECL Basic Kit . | Exposure time: 1s.