

Product datasheet for **TA378629**

MRE11 Rabbit Polyclonal Antibody

Product data:

| | |
|-------------------------|-------------------------------------------------------------------------------------------------------------------|
| Product Type: | Primary Antibodies |
| Applications: | IP, WB |
| Recommended Dilution: | WB,1:500 - 1:2000 IP,1:50 - 1:200 |
| Reactivity: | Human, Rat |
| Modifications: | Unmodified |
| Host: | Rabbit |
| Isotype: | IgG |
| Clonality: | Polyclonal |
| Immunogen: | Recombinant fusion protein containing a sequence corresponding to amino acids 1-205 of human MRE11 (NP_005581.2). |
| Formulation: | Buffer: PBS with 0.02% sodium azide,50% glycerol,pH7.3. |
| Concentration: | lot specific |
| Purification: | Affinity purification |
| Conjugation: | Unconjugated |
| Storage: | Store at -20°C. Avoid freeze / thaw cycles. |
| Stability: | Shelf life: one year from despatch. |
| Predicted Protein Size: | 77kDa/80kDa/81kDa |
| Gene Name: | MRE11 homolog A, double strand break repair nuclease |
| Database Link: | Entrez Gene 4361 Human P49959 |



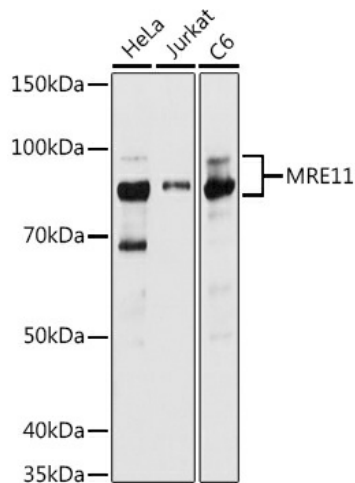
[View online »](#)

Background:

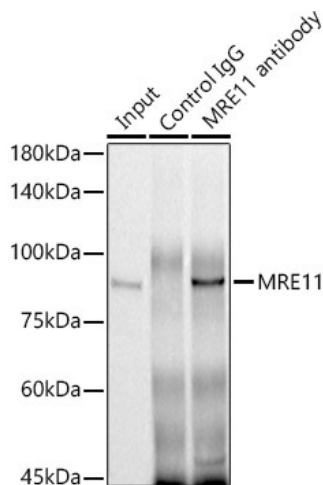
This gene encodes a nuclear protein involved in homologous recombination, telomere length maintenance, and DNA double-strand break repair. By itself, the protein has 3' to 5' exonuclease activity and endonuclease activity. The protein forms a complex with the RAD50 homolog; this complex is required for nonhomologous joining of DNA ends and possesses increased single-stranded DNA endonuclease and 3' to 5' exonuclease activities. In conjunction with a DNA ligase, this protein promotes the joining of noncomplementary ends in vitro using short homologies near the ends of the DNA fragments. This gene has a pseudogene on chromosome 3. Alternative splicing of this gene results in two transcript variants encoding different isoforms.

Synonyms:

ATLD; HNGS1; MRE11; MRE11B

Product images:


Western blot analysis of extracts of various cell lines, using MRE11 antibody (TA378629) at 1:1000 dilution. | Secondary antibody: HRP Goat Anti-Rabbit IgG (H+L) at 1:10000 dilution. | Lysates/proteins: 25ug per lane. | Blocking buffer: 3% nonfat dry milk in TBST. | Detection: ECL Basic Kit . | Exposure time: 5s.



Immunoprecipitation analysis of 300ug extracts of HeLa cells using 3ug MRE11 antibody (TA378629). Western blot was performed from the immunoprecipitate using MRE11 antibody (TA378629) at a dilution of 1:1000.