

## Product datasheet for **TA378625S**

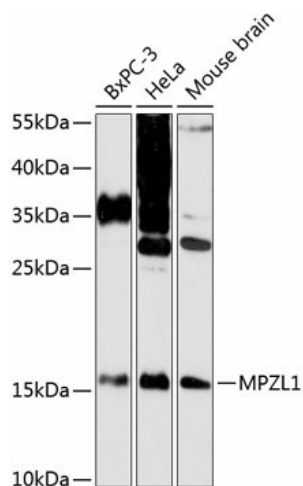
### MPZL (MPZL1) Rabbit Polyclonal Antibody

#### Product data:

Product Type:	Primary Antibodies
Applications:	ELISA, WB
Recommended Dilution:	WB, 1:500 - 1:2000 ELISA, Recommended starting concentration is 1 µg/mL. Please optimize the concentration based on your specific assay requirements.
Reactivity:	Human, Mouse, Rat
Modifications:	Unmodified
Host:	Rabbit
Isotype:	IgG
Clonality:	Polyclonal
Formulation:	Buffer: PBS with 0.02% sodium azide, 50% glycerol, pH 7.3.
Concentration:	lot specific
Purification:	Affinity purification
Conjugation:	Unconjugated
Storage:	Store at -20°C. Avoid freeze / thaw cycles.
Stability:	Shelf life: one year from despatch.
Predicted Protein Size:	29kDa
Gene Name:	myelin protein zero like 1
Database Link:	<a href="#">Entrez Gene 9019 Human O95297</a>
Background:	Predicted to enable structural molecule activity. Predicted to be involved in cell-cell signaling and transmembrane receptor protein tyrosine kinase signaling pathway. Predicted to act upstream of or within positive regulation of cell migration. Located in cell surface and focal adhesion.
Synonyms:	FLJ21047; MPZL1b; PZR; PZR1b; PZRα; PZRβ



[View online »](#)

**Product images:**

Western blot analysis of various lysates using MPZL1 Rabbit pAb (TA378625S) at 1:3000 dilution.

Secondary antibody: HRP-conjugated Goat anti-Rabbit IgG (H+L) (AS014) at 1:10000 dilution.

Lysates/proteins: 25µg per lane.

Blocking buffer: 3% nonfat dry milk in TBST.

Detection: ECL Enhanced Kit (RM00021).

Exposure time: 90s.