

Product datasheet for TA378621S

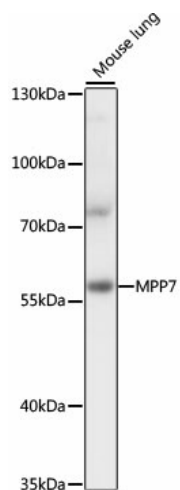
MPP7 Rabbit Polyclonal Antibody

Product data:

Product Type:	Primary Antibodies
Applications:	ELISA, WB
Recommended Dilution:	WB, 1:500 - 1:2000 ELISA, Recommended starting concentration is 1 µg/mL. Please optimize the concentration based on your specific assay requirements.
Reactivity:	Mouse
Modifications:	Unmodified
Host:	Rabbit
Isotype:	IgG
Clonality:	Polyclonal
Formulation:	Buffer: PBS with 0.02% sodium azide, 50% glycerol, pH 7.3.
Concentration:	lot specific
Purification:	Affinity purification
Conjugation:	Unconjugated
Storage:	Store at -20°C. Avoid freeze / thaw cycles.
Stability:	Shelf life: one year from despatch.
Predicted Protein Size:	66kDa
Gene Name:	membrane palmitoylated protein 7
Database Link:	Q5T2T1
Background:	The protein encoded by this gene is a member of the p55 Stardust family of membrane-associated guanylate kinase (MAGUK) proteins, which function in the establishment of epithelial cell polarity. This family member forms a complex with the polarity protein DLG1 (discs, large homolog 1) and facilitates epithelial cell polarity and tight junction formation. Polymorphisms in this gene are associated with variations in site-specific bone mineral density (BMD). Alternative splicing results in multiple transcript variants.
Synonyms:	FLJ32798; OTTHUMP00000019377; OTTHUMP00000019378


[View online »](#)

Product images:



Western blot analysis of lysates from mouse lung