

Product datasheet for **TA378610S**

BRP44 (MPC2) Rabbit Polyclonal Antibody

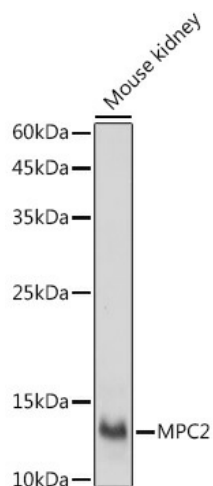
Product data:

Product Type:	Primary Antibodies
Applications:	ELISA, IHC, WB
Recommended Dilution:	WB, 1:500 - 1:1000 IHC-P, 1:50 - 1:200 ELISA, Recommended starting concentration is 1 µg/mL. Please optimize the concentration based on your specific assay requirements.
Reactivity:	Mouse, Rat
Modifications:	Unmodified
Host:	Rabbit
Isotype:	IgG
Clonality:	Polyclonal
Formulation:	Buffer: PBS with 0.02% sodium azide, 50% glycerol, pH 7.3.
Concentration:	lot specific
Purification:	Affinity purification
Conjugation:	Unconjugated
Storage:	Store at -20°C. Avoid freeze / thaw cycles.
Stability:	Shelf life: one year from despatch.
Predicted Protein Size:	14kDa
Gene Name:	mitochondrial pyruvate carrier 2
Database Link:	O95563
Background:	Enables identical protein binding activity. Predicted to be involved in mitochondrial pyruvate transmembrane transport. Predicted to act upstream of or within mitochondrial acetyl-CoA biosynthetic process from pyruvate and positive regulation of insulin secretion involved in cellular response to glucose stimulus. Located in mitochondrion.
Synonyms:	0610006C01Rik; 2010002I07Rik; 2610205H19Rik; AA108335; Brp44; ESTM43; RGD1563422

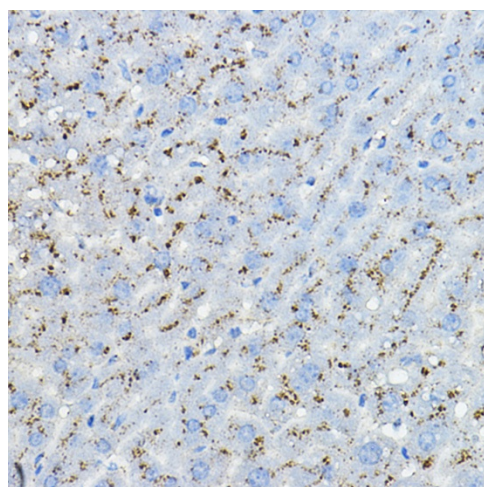


[View online »](#)

Product images:



Western blot analysis of lysates from Mouse kidney



Immunohistochemistry analysis of paraffin-embedded Mouse liver using MPC2 Rabbit pAb ([TA378610]) at dilution of 1:100 (40x lens). High pressure antigen retrieval performed with 0.01M Citrate Bufferr (pH 6.0) prior to IHC staining.