

Product datasheet for **TA378610**

BRP44 (MPC2) Rabbit Polyclonal Antibody

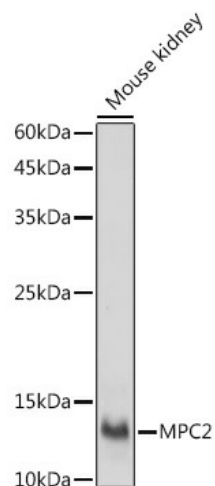
Product data:

Product Type:	Primary Antibodies
Applications:	IHC, WB
Recommended Dilution:	WB,1:500 - 1:2000 IHC,1:50 - 1:200
Reactivity:	Mouse, Rat
Modifications:	Unmodified
Host:	Rabbit
Isotype:	IgG
Clonality:	Polyclonal
Immunogen:	Recombinant protein of human MPC2.
Formulation:	Buffer: PBS with 0.02% sodium azide,50% glycerol,pH7.3.
Concentration:	lot specific
Purification:	Affinity purification
Conjugation:	Unconjugated
Storage:	Store at -20°C. Avoid freeze / thaw cycles.
Stability:	Shelf life: one year from despatch.
Predicted Protein Size:	14kDa
Gene Name:	mitochondrial pyruvate carrier 2
Database Link:	O95563
Background:	Mediates the uptake of pyruvate into mitochondria.
Synonyms:	0610006C01Rik; 2010002I07Rik; 2610205H19Rik; AA108335; Brp44; ESTM43; RGD1563422



[View online »](#)

Product images:



Western blot analysis of extracts of Mouse kidney, using MPC2 antibody (TA378610) at 1:1000 dilution. | Secondary antibody: HRP Goat Anti-Rabbit IgG (H+L) at 1:10000 dilution. | Lysates/proteins: 25ug per lane. | Blocking buffer: 3% nonfat dry milk in TBST. | Detection: ECL Basic Kit . | Exposure time: 30s.