

## Product datasheet for **TA378609S**

### **BRP44L (MPC1) Rabbit Polyclonal Antibody**

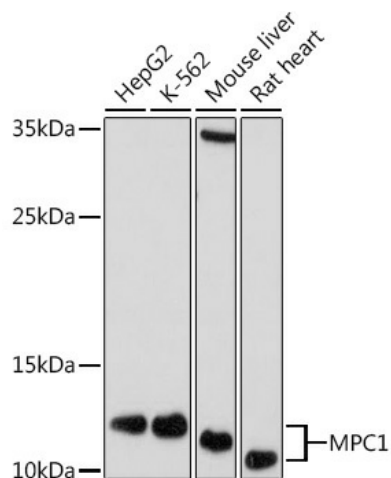
#### **Product data:**

<b>Product Type:</b>	Primary Antibodies
<b>Applications:</b>	ELISA, IP, WB
<b>Recommended Dilution:</b>	WB, 1:500 - 1:1000 IP, 0.5µg-4µg antibody for 200µg-400µg extracts of whole cells ELISA, Recommended starting concentration is 1 µg/mL. Please optimize the concentration based on your specific assay requirements.
<b>Reactivity:</b>	Human, Mouse, Rat
<b>Modifications:</b>	Unmodified
<b>Host:</b>	Rabbit
<b>Isotype:</b>	IgG
<b>Clonality:</b>	Polyclonal
<b>Formulation:</b>	Buffer: PBS with 0.02% sodium azide, 50% glycerol, pH 7.3.
<b>Concentration:</b>	lot specific
<b>Purification:</b>	Affinity purification
<b>Conjugation:</b>	Unconjugated
<b>Storage:</b>	Store at -20°C. Avoid freeze / thaw cycles.
<b>Stability:</b>	Shelf life: one year from despatch.
<b>Predicted Protein Size:</b>	12kDa
<b>Gene Name:</b>	mitochondrial pyruvate carrier 1
<b>Database Link:</b>	<a href="#">Entrez Gene 51660 Human Q9Y5U8</a>
<b>Background:</b>	The protein encoded by this gene is part of an MPC1/MPC2 heterodimer that is responsible for transporting pyruvate into mitochondria. The encoded protein is found in the inner mitochondrial membrane. Defects in this gene are a cause of mitochondrial pyruvate carrier deficiency. Several transcript variants, some protein coding and one non-protein coding, have been found for this gene.
<b>Synonyms:</b>	0610006G08Rik; 3830411I18Rik; Brp44l

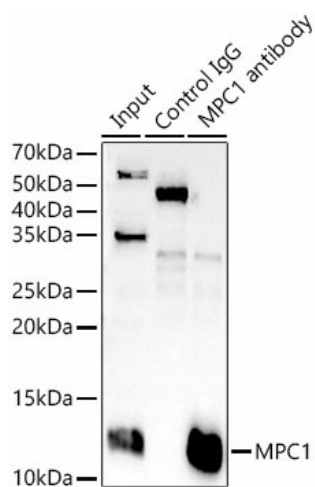


[View online »](#)

## Product images:



Western blot analysis of various lysates using MPC1 Rabbit pAb ([TA378609]) at 1:1000 dilution. Secondary antibody: HRP-conjugated Goat anti-Rabbit IgG (H+L) (AS014) at 1:10000 dilution. Lysates/proteins: 25µg per lane. Blocking buffer: 3% nonfat dry milk in TBST. Detection: ECL Basic Kit (RM00020). Exposure time: 30s.



Immunoprecipitation analysis of 300 µg extracts of K-562 cells using 3 µg MPC1 antibody ([TA378609]). Western blot was performed from the immunoprecipitate using MPC1 antibody ([TA378609]) at a dilution of 1:1000.