

## Product datasheet for **TA378609**

### BRP44L (MPC1) Rabbit Polyclonal Antibody

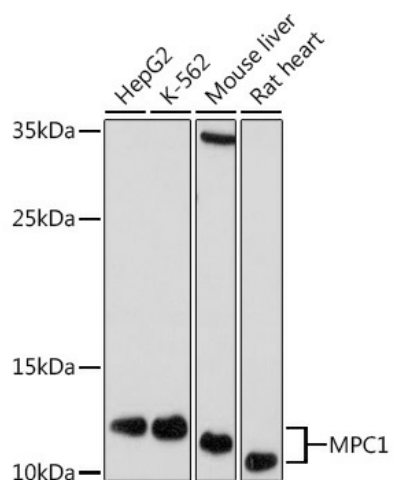
#### Product data:

|                         |  |
|-------------------------|--|
| Product Type:           | Primary Antibodies   |
| Applications:           | IP, WB   |
| Recommended Dilution:   | WB,1:500 - 1:2000  |
| Reactivity:             | Human, Mouse, Rat  |
| Modifications:          | Unmodified   |
| Host:                   | Rabbit   |
| Isotype:                | IgG  |
| Clonality:              | Polyclonal   |
| Immunogen:              | Recombinant protein of human MPC1.   |
| Formulation:            | Buffer: PBS with 0.02% sodium azide,50% glycerol,pH7.3.  |
| Concentration:          | lot specific   |
| Purification:           | Affinity purification  |
| Conjugation:            | Unconjugated   |
| Storage:                | Store at -20°C. Avoid freeze / thaw cycles.  |
| Stability:              | Shelf life: one year from despatch.  |
| Predicted Protein Size: | 12kDa  |
| Gene Name:              | mitochondrial pyruvate carrier 1   |
| Database Link:          | <a href="#">Entrez Gene 51660 Human Q9Y5U8</a>   |
| Background:             | The protein encoded by this gene is part of an MPC1/MPC2 heterodimer that is responsible for transporting pyruvate into mitochondria. The encoded protein is found in the inner mitochondrial membrane. Defects in this gene are a cause of mitochondrial pyruvate carrier deficiency. Several transcript variants, some protein coding and one non-protein coding, have been found for this gene. |
| Synonyms:               | 0610006G08Rik; 3830411I18Rik; Brp44l   |



[View online »](#)

## Product images:



Western blot analysis of extracts of various cell lines, using MPC1 antibody (TA378609) at 1:1000 dilution. | Secondary antibody: HRP Goat Anti-Rabbit IgG (H+L) at 1:10000 dilution. | Lysates/proteins: 25ug per lane. | Blocking buffer: 3% nonfat dry milk in TBST. | Detection: ECL Basic Kit. | Exposure time: 30s.