

Product datasheet for **TA378607S**

MOV10 Rabbit Polyclonal Antibody

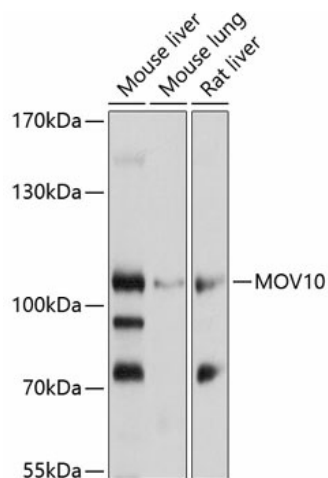
Product data:

Product Type:	Primary Antibodies
Applications:	ELISA, WB
Recommended Dilution:	WB, 1:1000 - 1:2000 ELISA, Recommended starting concentration is 1 µg/mL. Please optimize the concentration based on your specific assay requirements.
Reactivity:	Human, Mouse, Rat
Modifications:	Unmodified
Host:	Rabbit
Isotype:	IgG
Clonality:	Polyclonal
Formulation:	Buffer: PBS with 0.02% sodium azide, 50% glycerol, pH 7.3.
Concentration:	lot specific
Purification:	Affinity purification
Conjugation:	Unconjugated
Storage:	Store at -20°C. Avoid freeze / thaw cycles.
Stability:	Shelf life: one year from despatch.
Predicted Protein Size:	114kDa
Gene Name:	Mov10 RISC complex RNA helicase
Database Link:	Entrez Gene 4343 Human Q9HCE1
Background:	Enables 5'-3' RNA helicase activity and RNA binding activity. Involved in defense response to virus; negative regulation of transposition, RNA-mediated; and posttranscriptional regulation of gene expression. Located in P-body and cytosol. Implicated in hypertension.
Synonyms:	DKFZp667O1423; FLJ32791; fSAP113; gb110; KIAA1631; MGC2948; OTTHUMP00000013679; OTTHUMP00000013680



[View online »](#)

Product images:



Western blot analysis of various lysates using MOV10 Rabbit pAb ([TA378607]) at 1:1000 dilution.

Secondary antibody: HRP-conjugated Goat anti-Rabbit IgG (H+L) (AS014) at 1:10000 dilution.

Lysates/proteins: 25µg per lane.

Blocking buffer: 3% nonfat dry milk in TBST.

Detection: ECL Basic Kit (RM00020).

Exposure time: 30s.