

## Product datasheet for **TA378604S**

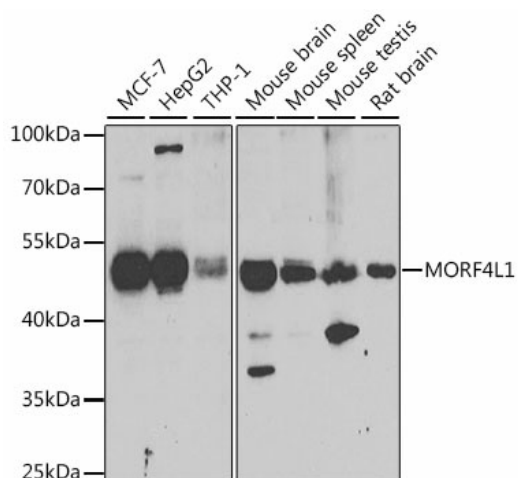
### **MRG15 (MORF4L1) Rabbit Polyclonal Antibody**

#### **Product data:**

Product Type:	Primary Antibodies
Applications:	ELISA, WB
Recommended Dilution:	WB, 1:500 - 1:2000 ELISA, Recommended starting concentration is 1 µg/mL. Please optimize the concentration based on your specific assay requirements.
Reactivity:	Human, Mouse, Rat
Modifications:	Unmodified
Host:	Rabbit
Isotype:	IgG
Clonality:	Polyclonal
Formulation:	Buffer: PBS with 0.02% sodium azide, 50% glycerol, pH 7.3.
Concentration:	lot specific
Purification:	Affinity purification
Conjugation:	Unconjugated
Storage:	Store at -20°C. Avoid freeze / thaw cycles.
Stability:	Shelf life: one year from despatch.
Predicted Protein Size:	41kDa
Gene Name:	mortality factor 4 like 1
Database Link:	<a href="#">Entrez Gene 10933 Human Q9UBU8</a>
Background:	Enables protein N-terminus binding activity. Involved in double-strand break repair via homologous recombination and histone modification. Located in nuclear speck. Part of NuA4 histone acetyltransferase complex and Sin3 complex.
Synonyms:	Eaf3; FWP006; HsT17725; MEAF3; MGC10631; MORFRG15; MRG15; S863-6



[View online »](#)

**Product images:**


Western blot analysis of various lysates using MORF4L1 Rabbit pAb (TA378604) at 1:1000 dilution.

Secondary antibody: HRP-conjugated Goat anti-Rabbit IgG (H+L) (AS014) at 1:10000 dilution.

Lysates/proteins: 25µg per lane.

Blocking buffer: 3% nonfat dry milk in TBST.

Detection: ECL Enhanced Kit (RM00021).

Exposure time: 90s.