

Product datasheet for **TA378602**

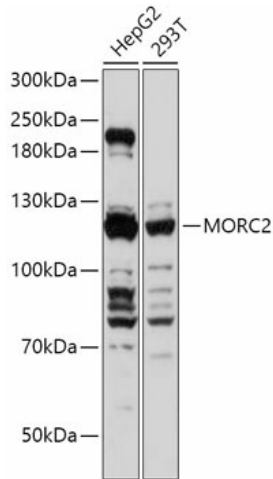
ZCWCC1 (MORC2) Rabbit Polyclonal Antibody

Product data:

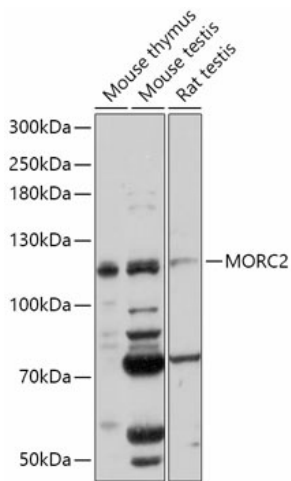
Product Type:	Primary Antibodies
Applications:	WB
Recommended Dilution:	WB,1:500 - 1:2000
Reactivity:	Human, Mouse, Rat
Modifications:	Unmodified
Host:	Rabbit
Isotype:	IgG
Clonality:	Polyclonal
Immunogen:	Recombinant fusion protein containing a sequence corresponding to amino acids 60-250 of human MORC2 (NP_055756.1).
Formulation:	Buffer: PBS with 0.02% sodium azide,50% glycerol,pH7.3.
Concentration:	lot specific
Purification:	Affinity purification
Conjugation:	Unconjugated
Storage:	Store at -20°C. Avoid freeze / thaw cycles.
Stability:	Shelf life: one year from despatch.
Gene Name:	MORC family CW-type zinc finger 2
Database Link:	Entrez Gene 22880 Human Q9Y6X9
Background:	This gene encodes a member of the Microrchidia (MORC) protein superfamily. The encoded protein is known to regulate the condensation of heterochromatin in response to DNA damage and play a role in repressing transcription. The protein has been found to regulate the activity of ATP citrate lyase via specific interaction with this enzyme in the cytosol of lipogenic breast cancer cells. The protein also plays a role in lipogenesis and adipocyte differentiation. Alternative splicing results in multiple transcript variants encoding different isoforms. [provided by RefSeq, Feb 2016]
Synonyms:	AC004542.C22.1; KIAA0852; ZCW3; ZCWCC1



[View online »](#)

Product images:


Western blot analysis of extracts of various cell lines, using MORC2 antibody (TA378602) at 1:1000 dilution. | Secondary antibody: HRP Goat Anti-Rabbit IgG (H+L) at 1:10000 dilution. | Lysates/proteins: 25ug per lane. | Blocking buffer: 3% nonfat dry milk in TBST. | Detection: ECL Basic Kit . | Exposure time: 5s.



Western blot analysis of extracts of various cell lines, using MORC2 antibody (TA378602) at 1:1000 dilution. | Secondary antibody: HRP Goat Anti-Rabbit IgG (H+L) at 1:10000 dilution. | Lysates/proteins: 25ug per lane. | Blocking buffer: 3% nonfat dry milk in TBST. | Detection: ECL Basic Kit . | Exposure time: 60s.