

Product datasheet for **TA378600S**

MON1A Rabbit Polyclonal Antibody

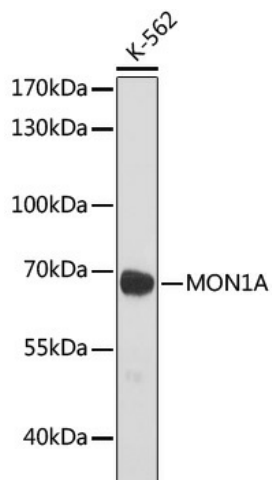
Product data:

Product Type:	Primary Antibodies
Applications:	ELISA, WB
Recommended Dilution:	WB, 1:500 - 1:2000 ELISA, Recommended starting concentration is 1 µg/mL. Please optimize the concentration based on your specific assay requirements.
Reactivity:	Human
Host:	Rabbit
Isotype:	IgG
Clonality:	Polyclonal
Formulation:	Buffer: PBS with 0.02% sodium azide, 50% glycerol, pH 7.3.
Concentration:	lot specific
Purification:	Affinity purification
Conjugation:	Unconjugated
Storage:	Store at -20°C. Avoid freeze / thaw cycles.
Stability:	Shelf life: one year from despatch.
Predicted Protein Size:	73kDa
Gene Name:	MON1 homolog A, secretory trafficking associated
Database Link:	Entrez Gene 84315 Human Q86VX9
Background:	Enables guanyl-nucleotide exchange factor activity. Predicted to be involved in protein secretion. Predicted to act upstream of or within cellular iron ion homeostasis and protein transport. Part of Mon1-Ccz1 complex.
Synonyms:	FLJ97088; MGC13272; SAND1



[View online »](#)

Product images:



Western blot analysis of lysates from K-562 cells