

Product datasheet for **TA378600**

MON1A Rabbit Polyclonal Antibody

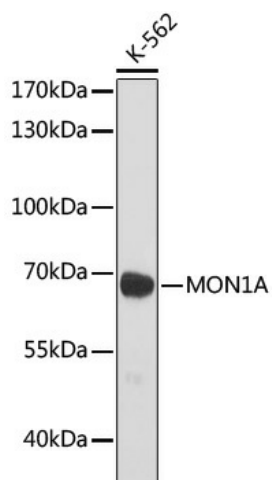
Product data:

Product Type:	Primary Antibodies
Applications:	WB
Recommended Dilution:	WB,1:500 - 1:2000
Reactivity:	Human
Host:	Rabbit
Isotype:	IgG
Clonality:	Polyclonal
Immunogen:	Recombinant protein of human MON1A.
Formulation:	Buffer: PBS with 0.02% sodium azide,50% glycerol,pH7.3.
Concentration:	lot specific
Purification:	Affinity purification
Conjugation:	Unconjugated
Storage:	Store at -20°C. Avoid freeze / thaw cycles.
Stability:	Shelf life: one year from despatch.
Predicted Protein Size:	73kDa
Gene Name:	MON1 homolog A, secretory trafficking associated
Database Link:	Entrez Gene 84315 Human Q86VX9
Background:	Plays an important role in membrane trafficking through the secretory apparatus. Not involved in endocytic trafficking to lysosomes (By similarity. Acts in concert with CCZ1, as a guanine exchange factor (GEF for RAB7, promotes the exchange of GDP to GTP, converting it from an inactive GDP-bound form into an active GTP-bound form.
Synonyms:	FLJ97088; MGC13272; SAND1



[View online »](#)

Product images:



Western blot analysis of extracts of K-562 cells, using MON1A antibody (TA378600) at 1:1000 dilution. | Secondary antibody: HRP Goat Anti-Rabbit IgG (H+L) at 1:10000 dilution. | Lysates/proteins: 25ug per lane. | Blocking buffer: 3% nonfat dry milk in TBST. | Detection: ECL Basic Kit . | Exposure time: 2min.