

Product datasheet for **TA378593S**

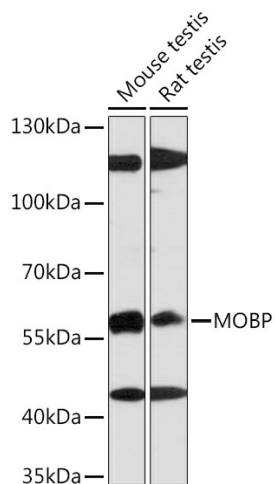
MOBP Rabbit Polyclonal Antibody

Product data:

Product Type:	Primary Antibodies
Applications:	ELISA, WB
Recommended Dilution:	WB, 1:500 - 1:1000 ELISA, Recommended starting concentration is 1 µg/mL. Please optimize the concentration based on your specific assay requirements.
Reactivity:	Human, Mouse, Rat
Modifications:	Unmodified
Host:	Rabbit
Isotype:	IgG
Clonality:	Polyclonal
Formulation:	Buffer: PBS with 0.02% sodium azide, 50% glycerol, pH 7.3.
Concentration:	lot specific
Purification:	Affinity purification
Conjugation:	Unconjugated
Storage:	Store at -20°C. Avoid freeze / thaw cycles.
Stability:	Shelf life: one year from despatch.
Predicted Protein Size:	21kDa
Gene Name:	myelin-associated oligodendrocyte basic protein
Database Link:	Entrez Gene 4336 Human Q13875
Background:	Predicted to enable actin binding activity and myosin binding activity. Predicted to be a structural constituent of myelin sheath. Predicted to be involved in nervous system development. Predicted to be located in mitochondrion. Predicted to be active in cortical actin cytoskeleton. Implicated in frontotemporal dementia.
Synonyms:	MGC87379; OTTHUMP00000209608; OTTHUMP00000209637; OTTHUMP00000209638; OTTHUMP00000209639


[View online »](#)

Product images:



Western blot analysis of various lysates using MOBP Rabbit pAb (TA378593S) at 1:1000 dilution. Secondary antibody: HRP-conjugated Goat anti-Rabbit IgG (H+L) (AS014) at 1:10000 dilution. Lysates/proteins: 25µg per lane. Blocking buffer: 3% nonfat dry milk in TBST. Detection: ECL Enhanced Kit (RM00021). Exposure time: 90s.