

## Product datasheet for **TA378593**

### MOBP Rabbit Polyclonal Antibody

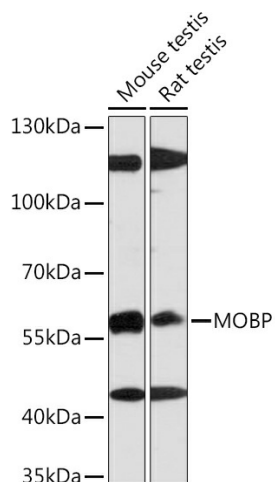
#### Product data:

Product Type:	Primary Antibodies
Applications:	WB
Recommended Dilution:	WB,1:500 - 1:1000 IF,1:50 - 1:200
Reactivity:	Human, Mouse, Rat
Modifications:	Unmodified
Host:	Rabbit
Isotype:	IgG
Clonality:	Polyclonal
Immunogen:	A synthetic Peptide of human MOBP
Formulation:	Buffer: PBS with 0.02% sodium azide,50% glycerol,pH7.3.
Concentration:	lot specific
Purification:	Affinity purification
Conjugation:	Unconjugated
Storage:	Store at -20°C. Avoid freeze / thaw cycles.
Stability:	Shelf life: one year from despatch.
Predicted Protein Size:	9kDa/20kDa/23kDa
Gene Name:	myelin-associated oligodendrocyte basic protein
Database Link:	<a href="#">Entrez Gene 4336 Human Q13875</a>
Background:	May play a role in compacting or stabilizing the myelin sheath, possibly by binding the negatively charged acidic phospholipids of the cytoplasmic membrane.
Synonyms:	MGC87379; OTTHUMP00000209608; OTTHUMP00000209637; OTTHUMP00000209638; OTTHUMP00000209639



[View online »](#)

## Product images:



Western blot analysis of extracts of various cell lines, using MOBP Rabbit pAb (TA378593) at 1:1000 dilution. | Secondary antibody: HRP Goat Anti-Rabbit IgG (H+L) at 1:10000 dilution. | Lysates/proteins: 25ug per lane. | Blocking buffer: 3% nonfat dry milk in TBST. | Detection: ECL Enhanced Kit. | Exposure time: 90s.