

## Product datasheet for **TA378591**

### **MOBK1B (MOB1A) Rabbit Polyclonal Antibody**

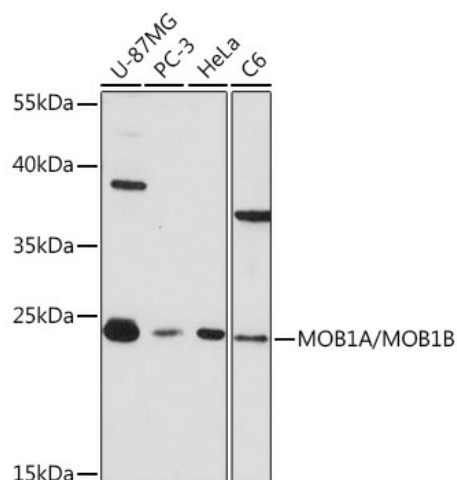
#### **Product data:**

<b>Product Type:</b>	Primary Antibodies
<b>Applications:</b>	ICC/IF, WB
<b>Recommended Dilution:</b>	WB,1:500 - 1:2000 IF,1:50 - 1:200
<b>Reactivity:</b>	Human, Mouse, Rat
<b>Host:</b>	Rabbit
<b>Isotype:</b>	IgG
<b>Clonality:</b>	Polyclonal
<b>Immunogen:</b>	Recombinant protein of human MOB1A/MOB1B.
<b>Formulation:</b>	Buffer: PBS with 0.02% sodium azide,50% glycerol,pH7.3.
<b>Concentration:</b>	lot specific
<b>Purification:</b>	Affinity purification
<b>Conjugation:</b>	Unconjugated
<b>Storage:</b>	Store at -20°C. Avoid freeze / thaw cycles.
<b>Stability:</b>	Shelf life: one year from despatch.
<b>Gene Name:</b>	MOB kinase activator 1A
<b>Database Link:</b>	<a href="#">Entrez Gene 55233 Human Q9H8S9</a>
<b>Background:</b>	The protein MOB1 is considered to be one of the core components of the mammalian Hippo signaling pathway, which controls organ size and tumor growth by enhancing apoptosis. Loss of the encoded protein results in cell proliferation and cancer formation. The encoded protein is also involved in the control of microtubule stability during cytokinesis. MOB1A and MOB1B, which have 95% sequence identity, play redundant biological roles and are both termed MOB1.
<b>Synonyms:</b>	4022402H07Rik; MOB1; MOB4B; Mobk1b; Mobk1b

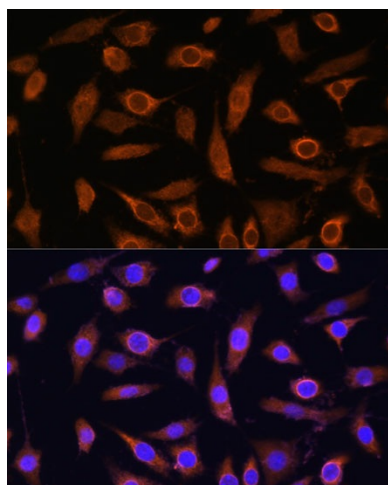


[View online »](#)

## Product images:



Western blot analysis of extracts of various cell lines, using MOB1A/MOB1B Rabbit pAb (TA378591) at 1:1000 dilution. | Secondary antibody: HRP Goat Anti-Rabbit IgG (H+L) at 1:10000 dilution. | Lysates/proteins: 25ug per lane. | Blocking buffer: 3% nonfat dry milk in TBST. | Detection: ECL Basic Kit. | Exposure time: 1min.



Immunofluorescence analysis of L929 cells using MOB1A/MOB1B antibody (TA378591) at dilution of 1:100. Blue: DAPI for nuclear staining.