

Product datasheet for **TA378585**

MMP26 Rabbit Polyclonal Antibody

Product data:

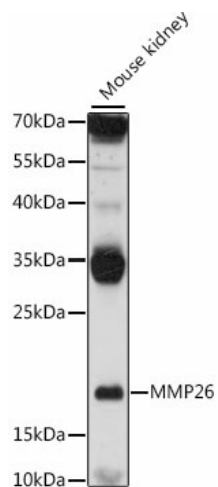
Product Type:	Primary Antibodies
Applications:	WB
Recommended Dilution:	WB,1:500 - 1:2000
Reactivity:	Mouse
Modifications:	Unmodified
Host:	Rabbit
Isotype:	IgG
Clonality:	Polyclonal
Immunogen:	Recombinant fusion protein containing a sequence corresponding to amino acids 90-261 of human MMP26 (NP_068573.2).
Formulation:	Buffer: PBS with 0.02% sodium azide,50% glycerol,pH7.3.
Concentration:	lot specific
Purification:	Affinity purification
Conjugation:	Unconjugated
Storage:	Store at -20°C. Avoid freeze / thaw cycles.
Stability:	Shelf life: one year from despatch.
Predicted Protein Size:	29kDa
Gene Name:	matrix metalloproteinase 26
Database Link:	Q9NRE1
Background:	Proteins of the matrix metalloproteinase (MMP) family are involved in the breakdown of extracellular matrix in normal physiological processes, such as embryonic development, reproduction, and tissue remodeling, as well as in disease processes, such as arthritis and metastasis. The encoded preproprotein is proteolytically processed to generate the mature enzyme. This enzyme may degrade collagen type IV, fibronectin, fibrinogen, and beta-casein, and activate matrix metalloproteinase-9 by cleavage. The protein differs from most MMP family members in that it lacks a conserved C-terminal protein domain. The encoded protein may promote cell invasion in multiple human cancers.



[View online »](#)

Synonyms: Endometase; Matrilysin-2; MGC126590; MGC126592; MMP-26; OTTHUMP00000069244

Product images:



Western blot analysis of extracts of mouse kidney, using MMP26 antibody (TA378585) at 1:1000 dilution. | Secondary antibody: HRP Goat Anti-Rabbit IgG (H+L) at 1:10000 dilution. | Lysates/proteins: 25ug per lane. | Blocking buffer: 3% nonfat dry milk in TBST. | Detection: ECL Basic Kit . | Exposure time: 30s.