

## Product datasheet for **TA378568**

### I Afadin (AFDN) Rabbit Polyclonal Antibody

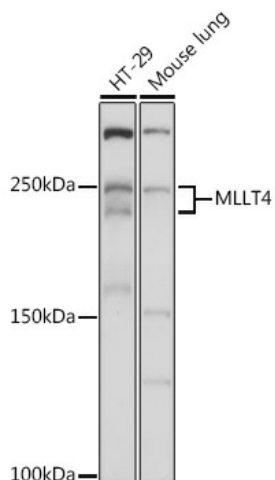
#### Product data:

|                       |  |
|-----------------------|--|
| Product Type:         | Primary Antibodies   |
| Applications:         | IHC, WB  |
| Recommended Dilution: | WB,1:500 - 1:2000<br>IHC,1:50 - 1:200  |
| Reactivity:           | Human, Mouse, Rat  |
| Host:                 | Rabbit   |
| Isotype:              | IgG  |
| Clonality:            | Polyclonal   |
| Immunogen:            | Recombinant protein of Human MLLT4.  |
| Formulation:          | Buffer: PBS with 0.02% sodium azide,50% glycerol,pH7.3.  |
| Concentration:        | lot specific   |
| Purification:         | Affinity purification  |
| Conjugation:          | Unconjugated   |
| Storage:              | Store at -20°C. Avoid freeze / thaw cycles.  |
| Stability:            | Shelf life: one year from despatch.  |
| Gene Name:            | myeloid/lymphoid or mixed-lineage leukemia; translocated to, 4   |
| Database Link:        | <a href="#">Entrez Gene 4301 Human P55196</a>  |
| Background:           | This gene encodes a multi-domain protein involved in signaling and organization of cell junctions during embryogenesis. It has also been identified as the fusion partner of acute lymphoblastic leukemia (ALL-1) gene, involved in acute myeloid leukemias with t(6;11) (q27;q23) translocation. Alternatively spliced transcript variants encoding different isoforms have been described for this gene, however, not all have been fully characterized.[provided by RefSeq, May 2011] |
| Synonyms:             | AF-6; AF6; AFADIN; FLJ34371; RP3-431P23.3  |



[View online »](#)

## Product images:



Western blot analysis of extracts of various cell lines, using MLLT4 antibody (TA378568) at 1:1000 dilution. | Secondary antibody: HRP Goat Anti-Rabbit IgG (H+L) at 1:10000 dilution. | Lysates/proteins: 25ug per lane. | Blocking buffer: 3% nonfat dry milk in TBST. | Detection: ECL Basic Kit . | Exposure time: 1s.