

## Product datasheet for **TA378564S**

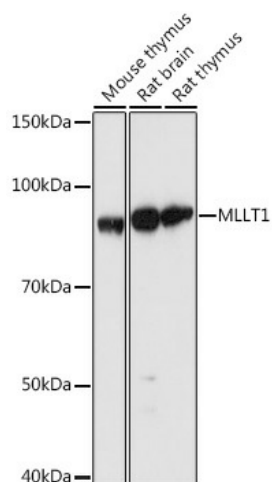
### MLLT1 Rabbit Polyclonal Antibody

#### Product data:

Product Type:	Primary Antibodies
Applications:	ELISA, WB
Recommended Dilution:	WB, 1:500 - 1:2000 ELISA, Recommended starting concentration is 1 µg/mL. Please optimize the concentration based on your specific assay requirements.
Reactivity:	Human, Mouse, Rat
Host:	Rabbit
Isotype:	IgG
Clonality:	Polyclonal
Formulation:	Buffer: PBS with 0.02% sodium azide, 50% glycerol, pH 7.3.
Concentration:	lot specific
Purification:	Affinity purification
Conjugation:	Unconjugated
Storage:	Store at -20°C. Avoid freeze / thaw cycles.
Stability:	Shelf life: one year from despatch.
Predicted Protein Size:	62kDa
Gene Name:	myeloid/lymphoid or mixed-lineage leukemia; translocated to, 1
Database Link:	<a href="#">Entrez Gene 4298 Human Q03111</a>
Background:	Predicted to be involved in regulation of transcription, DNA-templated. Predicted to act upstream of or within negative regulation of protein kinase activity. Located in cytosol; fibrillar center; and nucleoplasm. Part of transcription elongation factor complex.
Synonyms:	ENL; LTG19; YEATS1



[View online »](#)

**Product images:**


Western blot analysis of various lysates using MLLT1 Rabbit pAb (TA378564) at 1:1000 dilution.

Secondary antibody: HRP-conjugated Goat anti-Rabbit IgG (H+L) (AS014) at 1:10000 dilution.

Lysates/proteins: 25µg per lane.

Blocking buffer: 3% nonfat dry milk in TBST.

Detection: ECL Basic Kit (RM00020).

Exposure time: 5s.