

## Product datasheet for **TA378564**

### MLLT1 Rabbit Polyclonal Antibody

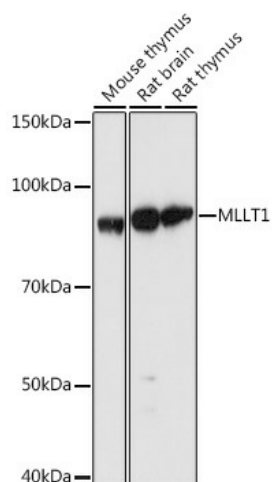
#### Product data:

Product Type:	Primary Antibodies
Applications:	WB
Recommended Dilution:	WB,1:500 - 1:2000
Reactivity:	Human, Mouse, Rat
Host:	Rabbit
Isotype:	IgG
Clonality:	Polyclonal
Immunogen:	Recombinant protein of human MLLT1.
Formulation:	Buffer: PBS with 0.02% sodium azide,50% glycerol,pH7.3.
Concentration:	lot specific
Purification:	Affinity purification
Conjugation:	Unconjugated
Storage:	Store at -20°C. Avoid freeze / thaw cycles.
Stability:	Shelf life: one year from despatch.
Gene Name:	myeloid/lymphoid or mixed-lineage leukemia; translocated to, 1
Database Link:	<a href="#">Entrez Gene 4298 Human Q03111</a>
Background:	Chromatin reader component of the super elongation complex (SEC, a complex required to increase the catalytic rate of RNA polymerase II transcription by suppressing transient pausing by the polymerase at multiple sites along the DNA. Specifically recognizes and binds acetylated and crotonylated histones, with a preference for histones that are crotonylated. Has a slightly higher affinity for binding histone H3 crotonylated at 'Lys-27' (H3K27cr than 'Lys-20' (H3K9cr20.
Synonyms:	ENL; LTG19; YEATS1



[View online »](#)

## Product images:



Western blot analysis of extracts of various cell lines, using MLLT1 antibody (TA378564) at 1:1000 dilution. | Secondary antibody: HRP Goat Anti-Rabbit IgG (H+L) at 1:10000 dilution. | Lysates/proteins: 25ug per lane. | Blocking buffer: 3% nonfat dry milk in TBST. | Detection: ECL Basic Kit . | Exposure time: 5s.