

Product datasheet for **TA378546S**

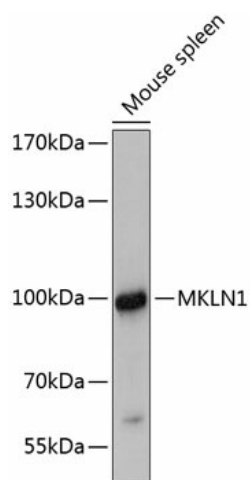
MKLN1 Rabbit Polyclonal Antibody

Product data:

Product Type:	Primary Antibodies
Applications:	ELISA, WB
Recommended Dilution:	WB, 1:500 - 1:1000 ELISA, Recommended starting concentration is 1 µg/mL. Please optimize the concentration based on your specific assay requirements.
Reactivity:	Mouse
Modifications:	Unmodified
Host:	Rabbit
Isotype:	IgG
Clonality:	Polyclonal
Formulation:	Buffer: PBS with 0.02% sodium azide, 50% glycerol, pH 7.3.
Concentration:	lot specific
Purification:	Affinity purification
Conjugation:	Unconjugated
Storage:	Store at -20°C. Avoid freeze / thaw cycles.
Stability:	Shelf life: one year from despatch.
Predicted Protein Size:	85kDa
Gene Name:	muskelin 1
Database Link:	Q9UL63
Background:	Muskelin is an intracellular protein that acts as a mediator of cell spreading and cytoskeletal responses to the extracellular matrix component thrombospondin I (MIM 188060) (Adams et al., 1998 [PubMed 9724633]).
Synonyms:	FLJ11162; TWA2

[View online »](#)

Product images:



Western blot analysis of lysates from mouse spleen